



# Ballwin *Life*

FROM YOUR MAYOR P. 3  
CHIEF'S CORNER P. 9  
THE FERRIS PARK PROJECT P. 14



## Our Mission

To protect, inform, and serve our community with diligence, respect, and transparency

### Contact Us

- [City of Ballwin](#)  
(636) 227-9000  
www.ballwin.mo.us
- [Code Enforcement](#)  
(636) 227-9000 \*option 3
- [Ballwin Golf Course & Club](#)  
(636) 227-1750
- [Municipal Courts](#)  
(636) 227-9000 \*option 4
- [North Pointe Aquatic Center](#)  
(636) 227-2981
- [Parks and Recreation](#)  
(636) 227-9000 \*option 6
- [Ballwin Police Department](#)  
(636) 227-9000 \*option 7
- [The Pointe at Ballwin Commons](#)  
(636) 227-8950
- [Public Works](#)  
(636) 227-9000 \*option 2

### Report an Issue

Issues may be reported online by visiting ballwin.mo.us or by phone.

[Report a Pothole or Street Tree](#)  
Contact Public Works

[Report a Code Issue](#)  
Contact Code Enforcement

[Report a Tip to Police](#)  
Contact the Police Department

**To report a crime in progress dial 911**

### Fire Protection

[Metro West](#)  
(636) 458-2100

[West County EMS & Fire](#)  
(636) 227-9350

[Monarch](#)  
(314) 514-0900

## Pain Affecting your Golf Game?

### Get Back on the Course with PRP Injections

ARCH ADVANCED PAIN MANAGEMENT



(636) 244-5004 | STLOUISPAINMANAGEMENT.COM

### MAYOR

Tim Pogue  
(636) 207-2386 (3320)  
tpogue@ballwin.mo.us

### WARD 1

Michael Finley  
(636) 207-2386 (3310)  
mfinley@ballwin.mo.us

### Mike Utt

(636) 207-2386 (3330)  
mutt@ballwin.mo.us

### WARD 2

Mark Stallmann  
(636) 207-2386 (3340)  
mstallmann@ballwin.mo.us

### Kevin M. Roach

(636) 207-2386 (3350)  
kroach@ballwin.mo.us

### WARD 3

Frank Fleming  
(636) 207-2386 (3370)  
ffleming@ballwin.mo.us

### Jim Leahy

(636) 207-2386 (3360)  
jleahy@ballwin.mo.us

### WARD 4

Ross Bullington  
(636) 207-2386 (3380)  
rbullington@ballwin.mo.us

### Ray Kerlagon

(636) 207-2386 (3390)  
rkerlagon@ballwin.mo.us

### CITY ADMINISTRATOR

Eric Sterman\*  
(636) 227-9000  
esterman@ballwin.mo.us

\*Starting Monday, August 10

# From Your Mayor



The City of Ballwin is the fourth largest city in St. Louis County, with a population of roughly 32,000. Although our community is predominantly residential, our business community plays a critical role in the vitality of the City and the identity of our community. With over 300 businesses ranging from restaurants and grocery stores to spas and salons, we are extremely fortunate to be able to

offer everything you need without having to leave the city.

Our sales taxes account for 45% of the City's general fund revenues, which means those tax dollars are used to support essential municipal services such as street maintenance, police, parks, and recreation facilities. Thanks to your support, we've enjoyed a healthy fiscal climate over the years and have been able to provide these full-service amenities, as well as a \$0 local property tax, to our residents.

In this challenging and unprecedented time, it's critical we do everything we can to support our Ballwin businesses. Our Shop Ballwin First program is a great way for residents to take advantage of discounts offered by our businesses, and for businesses to promote themselves to residents. A list of ways to support our businesses, along with more information on our Shop Ballwin First program, can be found on page five.

In closing, I urge each and every one of you to continue looking out for each other, checking in with your neighbors, and supporting our businesses. We are in this together and we will get through this together!

Tim Pogue



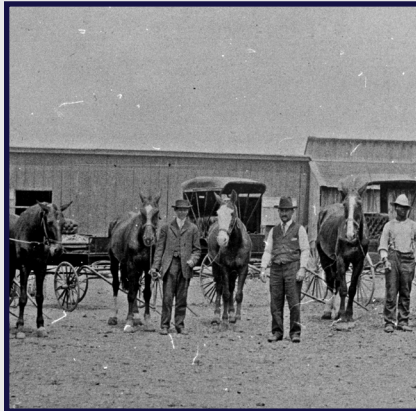
# Table of Contents

## Moment in History

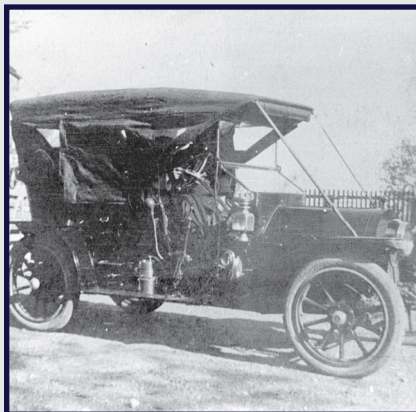
The next time you're frustrated with the traffic on Manchester Road, think back to a time in Ballwin when a "traffic jam" might have been a couple of horse-drawn carriages which were ambling along at five miles per hour. This portion of the Lewis & Clark Trail, which had become a mail route between St. Louis and Jefferson City, was where Fred and Rose Rethmeier would take Anna Collier (their neighbor's daughter) for a Sunday ride (top photo).



For those who didn't have their own rig or their own horse, John Bopp's livery stable was always an option (middle photo). As transportation needs increased, John Bopp expanded into running a bus service. He purchased a chain-driven vehicle that could withstand the rough road conditions of those times.



Not to be outdone, F. X. Essen brought the first Cadillac to Ballwin (bottom photo). Essen Chevrolet eventually began leasing cars through their Enterprise Leasing Company division, which was later shorted to ELCO.



Eventually, Manchester Road was paved, and then widened, and then widened again. In one form or another, it will continue to define Ballwin's future.

## Administration

- 5 Business Spotlights
- 6 Employee Retirements

## Public Works

- 7 Public Works Seasons
- 8 Requesting Service

## Police Department

- 9 Chief's Corner
- 10 Body Worn Cameras
- 11 The 9PM Routine

## Parks & Recreation

- 12 Pointe Information
- 14 The Ferris Park Project
- 15 Rec Programs

As you know, the current public health situation is ever changing, and as this publication is put together two months before it hits homes, we have decided to shorten this issue to 16 pages.

Shortening this issue will still allow us to publish important information and reduce costs, while hopefully avoiding any potentially inaccurate or no longer relevant content.

The most current information can always be found on our website, which we encourage you to check frequently!

# the biz Spotlight

## The Wolf Cafe



The Wolf, nestled between Clayton and Kehrs Mill, has been a part of the Ballwin community for the past eight years. The Wolf is a casual cafe serving clean and local products for breakfast, lunch, and dinner. They offer everything - from coffee, beer on tap, and cold-pressed juices to grass-fed burgers, brioche french toast, and several vegan options.

Current owners Bob and Denise Biribin have been in the restaurant business since high school and have truly loved every minute of it! They love being able to call Ballwin home for themselves and the Wolf.

"We love the feeling of belonging to a close-knit community."

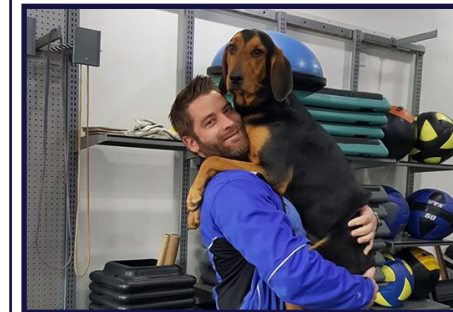
**Address:** 15480 Clayton Road

**Phone:** (636) 527-7027

**Website:** thewolfstl.com

**Shop Ballwin First Discount:** Free wolf cookie (chocolate chip) with food purchase

## ForeverFit



Physical activity has always been a part of Alex Kaminski's life. After graduating from Lindenwood University with a BS in Exercise Science and a Masters in Gerontology, he decided to open his business, ForeverFit, in February of 2015.

"I feel there is a need to educate adults on realistic fitness throughout the aging process. My programs are geared towards living a long, healthy, and independent life."

ForeverFit is a personal training and small group training studio, owned and operated solely by Alex... with the help of his beautiful dog, Lena.

**Address:** 15220 Manchester Road

**Phone:** (314) 562-0775

**Website:** nowforeverfit.com

**Shop Ballwin First Discount:** 1 free assessment/1 free personal training session

## #ShopBallwinFirst

The businesses which have been highlighted on this page are members of our free Shop Ballwin First Program, but we value every single business in Ballwin. All of our businesses play a vital role in the prosperity of our community!

We understand these past few months have been challenging for many... especially for our businesses. Now more than ever, we encourage you to shop in Ballwin and support our local businesses. There are several different ways you can continue to support our business community, including buying gift cards, leaving a positive review online, giving them a shoutout on social media, ordering takeout or delivery, subscribing to their newsletters, or liking them on Facebook.

Business owners, we want to remind you that the Shop Ballwin First program is completely free and a great way to market your business locally. If you are interested in participating or would like to know more, email [krobinson@ballwin.mo.us](mailto:krobinson@ballwin.mo.us) or visit [ballwin.mo.us/Shop-Ballwin-First/](http://ballwin.mo.us/Shop-Ballwin-First/)

Residents, a Resident ID Card from The Pointe at Ballwin Commons is all you need to get great deals!

# J.J. KOKESH & SON

## Plumbing & Supplies

BALLWIN, MO

(636) 391-1233



SINCE 1894

**24 Hour**  
Emergency Service

# Employee Retirements

Thank you for your dedication and contributions to our community!



**Dan Trower**

On May 22nd, Dan Trower retired after 30 years with the Ballwin Parks & Recreation Department!



**Sgt. Ron Moushey**

On July 10th, Sgt. Moushey retired after 40 years with the Ballwin Police Department!



**Mike Fink**


On July 13th, Mike Fink retired after 25 years with the Ballwin Public Works Department!





**Pete Kraut**

On July 31st, Pete Kraut retired after 35 years with Ballwin's Parks & Recreation and Public Works Departments!

## the Seasons of Public Works


 **Fall** - Around October, our crews start gearing up for our annual curbside leaf collection program, which is completely free for all residents!

 **Winter** - As you know, Missouri gets its share of winter weather! Our crews are responsible for snow removal in the City, including pretreating the roads before winter weather and plowing after it snows.

 **Spring** - With warmer weather comes...

mosquitos! We usually begin our annual attack on mosquitos in May of each year. The entire City is fogged with an EPA-approved insecticide on a weekly basis.

 **Summer** - Our construction season usually starts at the beginning of summer when school lets out. Construction includes major sidewalks and street projects, which are approved by the Board during the budgeting process.

 **Year Round** - Our crews handle many things year round, including work orders, tree removal, street repair, and more!



**Meet Public Works Director Jim Link!**

Jim Link has been a member of the Ballwin Public Works team for 12 years and was named Director of the department in 2018. Before joining our community, he worked in the cities of Kirkwood and Chesterfield in their respective Public Works departments.

As Public Works Director, Jim is responsible for the supervision of all 32 employees and the day-to-day operations of the department, which includes street maintenance, construction projects, tree trimming and removal, and more.

Jim's favorite thing about working in Public Works is the changing seasons. "You're never doing the same thing over and over. Your work changes with the seasons."

### PET SUPPLIES PLUS

Minus the hassle.

**Get them clean without the cleanup.**



Save time, shop online!  
**Let us do the heavy lifting!**  
 Restrictions may apply. **Free Curbside Pickup**

At Pet Supplies Plus, our stores are smaller by choice and our shelves are stocked with just the right products, specifically chosen to help you get in, get out, and get home happy.

- + Price Match Guarantee
- + Carefully selected products for all of your furry, scaly & feathery friends
- + Large variety of Made in the USA treats & toys

**\$2 off**  
**Self-service pet wash**

Valid until 9/30/20  
 Enter code 81297 at checkout

Preferred Pet Club members only. May be redeemed at Pet Supplies Plus Ballwin only. One coupon per household. May not be combined with any other offer. No cash value or cash back. Excludes gift cards, Dirty Dog Discount cards or prior purchases. Void if altered, reproduced, transferred, sold, or where prohibited by law. Offer may be revoked at any time. Purchase minimums must be met after all other discounts are applied but before sales tax. Customer is responsible for applicable taxes.

PET SUPPLIES PLUS

**Pet Supplies Plus Ballwin**  
 15311 Manchester Rd. | 636.686.7181  
 Mon-Sat: 9am-8pm • Sun: 10am-6pm  
*Independently owned and operated*

SHOPPING FOR CAR INSURANCE?  
 CALL ME FIRST.

AVERAGE ANNUAL SAVINGS: **\$356\***

DRIVERS WHO SWITCHED FROM:

Geico	saved \$305*	on average with Allstate
Progressive	saved \$478*	on average with Allstate
State Farm	saved \$318*	on average with Allstate

**Put your policy to the test.**  
 Drivers who switched to Allstate saved an average of \$356\* a year. So when you're shopping for car insurance, call me first. You could be surprised by how much you'll save.



**Lisa Clemente**  
 636-227-2229  
 110A Holloway Rd.  
 Ballwin



\*Savings based on national customer reported data for new policies written in 2016. Actual savings vary. Discounts subject to terms, conditions and availability. Allstate Fire & Casualty Ins. Co., Allstate Vehicle & Property Ins. Co., Allstate Property & Casualty Ins. Co. & affiliates: 2775 Sanders Rd. Northbrook, IL 60062. © 2018 Allstate Insurance Co.

11895369

# Requesting Service

Our Public Works Department is dedicated to serving your needs and making sure you have safe roads to drive on. So if you see something that needs our attention, let us know by using the Request Service feature on our website.

Step 1: Visit our website at [ballwin.mo.us](http://ballwin.mo.us), click Contact Us in the top right-hand corner, and click Report an Issue.

Step 2: Depending upon your needs, select the option that best describes your issue. Public Works is not the only department that uses this feature; you can also submit a tip to the Police or report a code violation to our Code Enforcement Division.

Step 3: When you submit a Public Works request, you will receive an automatic reply from the City. This means your request has been submitted to our department and is waiting for review. Once a supervisor reviews the work request, they will determine the best course of action and whether creating a work order is warranted. If a work order is created, it will be added into our system. Each work order will be addressed as soon as possible but please note, many factors play a part in the completion of a work order, including severity and weather.



## Putting you first made us #1.

**Greg Beasley, Agent**  
15212B Manchester Road  
Ballwin, MO 63011  
Bus: 636-227-4242  
[greg.beasley.b5wx@statefarm.com](mailto:greg.beasley.b5wx@statefarm.com)

Making you our #1 priority is what's made State Farm® #1\* in auto insurance. I'm here to listen to your needs and to help life go right.  
**CALL ME TODAY.**

\*Based on written premium as reported by SNL Financial 2014.



State Farm Mutual Automobile Insurance Company  
State Farm Indemnity Company; Bloomington, IL

1601917

State Farm County Mutual Insurance Company of Texas; Dallas, TX

# Chief's Corner



Nearly every industry out there has some type of accreditation or certification they can achieve... a set of standards that, if met and verified, acknowledges they are conducting their business while meeting the highest standards of that industry.

Law Enforcement is no different. Two decades ago the Missouri Police Chief's Association developed the Law Enforcement Certification Program. The designers of this program developed "best-practice" standards that help to mold an agency's policies and practices that guide the way they conduct themselves and deliver their services.

So what are these standards? A standard is "...a recognized, measurable, and necessary professional requirement setting a criteria for a specific process, function, service or procedure for law enforcement agency compliance."

There are over 225 standards that need to be met before an agency can receive their certification. These standards cover everything from command structure, to fiscal management, to use of force, to performance appraisals, to training, to inspections for equipment.

Each year the agency must show that they are meeting every standard. This is done through an on-site assessment conducted every third year. The assessors review not only the supportive paperwork for each standard (for each year), but they also do inspections and conduct interviews to verify that the standards are truly being met.

And the standards themselves are not static or "etched in stone." They are reviewed on a regular basis and updated to make sure that the certification process is meeting the most up-to-date best practices in law enforcement.

In 2014, the Ballwin Police Department began the process of meeting those standards and in November of 2016 we received our first Missouri Police Chief's Law Enforcement Certification. Our latest on-site assessment was in November of 2019, verifying once again our dedication to best practices in law enforcement.

As the Chief of Police I want our agency to meet the highest professional standards of the industry. And you, as a citizen, should expect no less!

- Chief Doug Schaeffler

# Body Worn Cameras



You may have noticed a change in the equipment that your Ballwin Police Officers have been wearing recently. Or maybe you didn't notice, because well... it is not really that noticeable of a change. Since March, all of our Patrol Officers and Supervisors have been wearing body cameras. These cameras look pretty similar to the microphones that we were previously wearing.

The new body worn cameras are pretty slick, as they sync with the existing in-car camera system and allow for the videos of the cameras to be watched simultaneously. They provide high-quality video for situations that the in-car camera system can not document efficiently. The cameras

are durable and designed to operate in the extreme temperatures that we are fortunate enough to experience here in Ballwin. Different mounting options are available for the cameras which will allow for the cameras to be worn on various types of uniforms and on coats during the winter months.

As with all new equipment, there comes a new policy. In order to very briefly sum up the policy, all official contacts with a Ballwin Police Officer are now being recorded on the body worn cameras. This shift in technology has been very smooth as our department has been accustomed to the in-car recording system for years.



**14649 Manchester Road • Ballwin, MO • 63011**

*(Former Johnny Mac's Sporting Goods)*

**Now Accepting New Patients**  
**Call Today and Ask About Our New Patient Specials!**

**636-238-4998**

## Helena Webb Meetings

Workshop writing and design for all your training needs

- Corporate
- Onboarding
- Sales
- Service

With 15 years of experience in the business meeting industry, Helena brings solution-based skills to live or virtual workshop development.

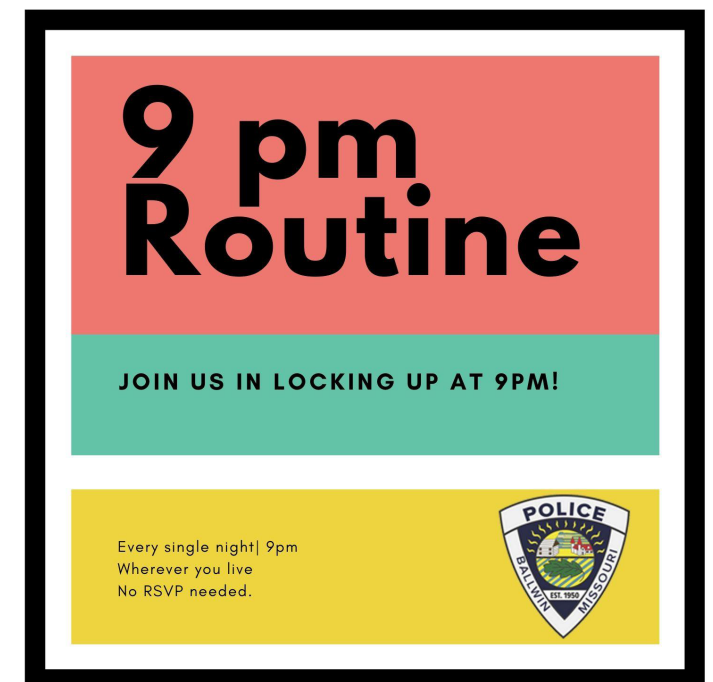


15274 Manchester Road Ste. 275 Ballwin, MO 63011 By appointment.  
 HelenaWebbMeetings@gmail.com 636-329-4804 HelenaTWebb.com

## The 9pm Routine

Securing your property is something police departments have talked about across the country for years. Making vulnerable access points more difficult to reach is one easy way to reduce the likelihood of becoming a victim of a crime. Three easy steps to become a harder target and less likely to become a victim of theft is to lock your car, close your garage, and lock the door from the garage into your home. At least one of these three points are often left unsecure by many residents.

The 9PM Routine has been an initiative pushed by many law enforcement agencies across the region and country, including your Ballwin Police. Essentially, it is taking time to make sure you have secured your home and vehicles every night before you start to wind down for the evening. Setting a recurring alarm on your phone for 9 p.m. is a great way to remember to check and make sure you are secure.





### Information

#1 Ballwin Commons Circle  
Ballwin, MO 63021  
(636) 227-8950

### Hours of Operation\*

Monday - Friday 5:15 a.m. - 8 p.m.  
Saturday 8 a.m. - 2 p.m.  
Sunday 8 a.m. - 2 p.m.

\*Hours changing Sept. 8 to M-F (5:15 a.m. - 10 p.m.) and Sa & Su (7 a.m. - 6 p.m.)

### Holiday Hours

Sept. 7: 5:15 a.m. - 1 p.m.

### Pointe Play Center (3 months - 10 years)

Monday - Friday 8:30 a.m. - 12 p.m.  
Monday - Thursday 5 p.m. - 8 p.m.  
Saturday 8:30 a.m. - 12 p.m.

### 20-Visit Swipe Cards

Youth, 3 - 18	\$110	\$170
Adult, 19 - 61	\$130	\$170
Senior, 62+	\$110	\$170
Hero	\$40	\$60

### Memberships

See table on the next page for our current membership rates. To receive resident rates, you must have a current resident ID Card. If a card is needed, bring a utility bill to The Pointe's welcome desk. Additional information:

- 1) Monthly options involve a \$20 activation fee.
- 2) Family memberships may include children living at home through the age of 23, and may not have more than two adults per household.
- 3) Senior Couple memberships only require one person be 62 or older.
- 4) Hero (Police, Fire, EMS, Veterans, and Active Military) memberships are only available for individuals.

### Fitness Center

The Pointe is home to a state-of-the-art fitness center including a full-service cardio section, Cybex weight-training section, and free-weight area. Whether your goal is to find a gym to help you build strength, lose weight, or just have a safe place to walk or run on an indoor track near your home, you need to get to The Pointe.

### Indoor Pool

The indoor pool at The Pointe features three Lap Lanes, a two-story water slide, an indoor water playground, lazy river, and vortex. The Pointe offers swim lessons, water aerobics, and more. Please review the Indoor Pool Schedule on our website to ensure the pool is open for the purpose you wish to use it.

### Fitness Classes & Personal Training

Our fitness center offers a number of different classes available to both patrons and guests. Group Fitness classes are included with any membership. They are provided on a first come, first served basis and do not require registration. Visit the Fitness Center page on our website for more information or to view the current Group Fitness and Specialized Fitness Class Schedules.

The Pointe has four personal trainers on staff to help you reach your fitness goals. If you want personalized, one-on-one attention to keep you safe and accelerate your fitness progress consider working with one of our certified trainers.

Residents	Pointe Monthly*	Pointe Yearly	Platinum Monthly*	Platinum Yearly	Annual Pool Pass	Pointe Daily Visit
Youth (3-18)	\$20	\$216	\$33	\$372	\$97	\$6
Adult (19-61)	\$33	\$372	\$49	\$564	\$125	\$7
Senior (62+)	\$19	\$204	\$36	\$408	\$97	\$6
Senior Couple*	\$26	\$288	\$46	\$528	\$153	N/A
Single+ One	\$41	\$468	\$71	\$828	\$205	N/A
Family*	\$46	\$528	\$78	\$912	\$239	N/A
Hero*	\$19	\$204	\$36	\$408	\$97	\$5

Nonresidents	Pointe Monthly*	Pointe Yearly	Platinum Monthly*	Platinum Yearly	Annual Pool Pass	Pointe Daily Visit
Youth (3-18)	\$31	\$348	\$46	\$528	\$153	\$9
Adult (19-61)	\$50	\$576	\$70	\$816	\$216	\$9
Senior (62+)	\$32	\$360	\$50	\$576	\$153	\$9
Senior Couple*	\$43	\$492	\$66	\$768	\$233	N/A
Single+ One	\$63	\$732	\$84	\$984	\$341	N/A
Family*	\$70	\$816	\$100	\$1,176	\$364	N/A
Hero*	\$32	\$360	\$50	\$576	\$153	\$8

\*See memberships section on page 12 for more details

### Membership Specials

August

- **Visit Card Class Special** - Receive two (2) additional visits for each card purchased.

September

- **Fall Back Into Fitness** - Get 10% off when you purchase an annual Platinum or Pointe membership. Not valid on debit memberships.
- **Open House Special** (Sept. 26) - Get 10% off special along with debit special. Waived entry fee and no upfront dues (first billing 10-15-2020) and receive a welcome gift.

October

- **Fall Back Into Fitness** - Get 10% off when you purchase an annual Platinum or Pointe membership. Not valid on debit memberships.

### Open House - Saturday, September 26

Complimentary use of fitness facilities including indoor track, strength and cardio equipment, gymnasium, indoor pool, kids activity center, and a variety of classes to try including spinning, yoga, and water aerobics. Membership Specials ALL DAY (see special above). No online registration required, just come on in and have some FUN!

# The Ferris Park Project

In 1996, Ferris Park was added to the Ballwin park system. The park was named in honor of former Alderman and City Treasurer Bob Ferris. The park is 12 acres and includes a soccer field, playground, comfort station, nature trails, pollinator garden, and a pavilion.

In November of 2000, citizens all across St. Louis County approved a new sales tax to help improve, restore, and expand their municipal parks and recreation programs. As a result of their votes, the Municipal Park Grant Commission of St. Louis County was formed and charged with keeping the promise made to taxpayers. The City of Ballwin has been awarded many grants over the years (2001, 2004, 2007, 2009, 2011, 2013, 2015, 2018, and most recently in 2019). Last year, the City of Ballwin was awarded a grant for \$525,000 to be used for park development.

Feedback received from the community outreach portion of Ballwin's Parks Master Plan recommended access to the playground from the parking lot, additional parking, and walking trails. Additionally, the master plan surveyed residents who identified walking/jogging, visiting nature areas, and fitness as some of the most important activities to their household.



**I love this town.**

**Steve Martinez Ins Agcy Inc**  
Steve Martinez, Agent  
104 Holloway Road  
Ballwin, MO 63011  
Bus: 636-227-7888

**Thanks, Ballwin Residents.**

I love being here to help life go right™ in a community where people are making a difference every day. Thank you for all you do.



The City of Ballwin teamed up with SWT Design in 2013 to complete a park master plan solely for Ferris Park. This plan led to the construction of the playground located near the front of the park.

SWT Design is now back to oversee the development, design, and implementation of the new construction. New amenities include a multi-use path, new parking lot, access to the playground, regraded recreational field, and an outdoor functional fitness structure with a shade feature.

Construction is scheduled to begin in September and be completed by the end of 2020 (subject to change).



# Ballwin Golf Course

333 Holloway Road | (636) 227-1750 | [ballwin.mo.us](http://ballwin.mo.us)  
Tee Times & Registration Online

Turkey Bowl Scramble  
November 14  
10 a.m. Shotgun Start  
3-person, 18-hole format  
Ballwin Golf Course  
\$165/team  
More info online

Get Golf Ready: Juniors  
September - October  
Saturdays (10:30 - 11:30 a.m.)  
11 - 17 years old  
Big Bend Golf Center  
\$59 Res, \$69 Non Res  
More info online

Get Golf Ready: Adults  
September - October  
Saturdays (9 - 10 a.m.)  
18+ years old  
Big Bend Golf Center  
\$89 Res, \$99 Non Res  
More info online

## Swim Lessons

Swim Lessons are available at The Pointe for kids (6mos - 16yrs) and adults. Lessons are offered year round and designed for all skill levels and abilities!

1-on-1, private lessons are also available!

Call (636) 227-8950 for more information or sign up online at [ballwin.mo.us](http://ballwin.mo.us)

# Rec Programs

Ballwin Parks & Recreation has many different types of programs and events for every age and activity level to enjoy! These include:

- Fall Concert Series
- Tennis Lessons
- Craft Beer Festival
- Spinning Classes
- Kids Triathlon
- Water Aerobics
- Moonlight Howl 5K
- Lunch and Bingo

These are a just a few of the things we have ready for you and your family and friends! Visit us online at [ballwin.mo.us](http://ballwin.mo.us) to see all of our offerings or to learn more about the activities and events mentioned above. Scroll to the bottom of the home page and click Online Registration and Tee Times to access the full list!





#1 Government Ctr  
Ballwin, MO 63011

### SUPPORT OUR BALLWIN LIFE MAGAZINE ADVERTISERS!

Ballwin is fortunate to be home to many small businesses that make our city such a great place to live, work, and play. The cost of printing and mailing the Ballwin Life Magazine is partially underwritten by the many local businesses that purchased the advertisements found throughout the publication. Please thank these businesses for their support by shopping locally.

VISIT US ONLINE AT: [www.ballwin.mo.us](http://www.ballwin.mo.us)



WHERE CUSTOMERS ARE FIRST AND CARS ARE SECOND TO NONE



**HUGE INVENTORY**  
**EXCEPTIONAL DISCOUNTS**  
**PICKUP AND DROPOFF SERVICE**  
**PROUD BALLWIN DEALER SINCE 1985**

**ELCO Chevrolet Cadillac**  
15110 Manchester Rd  
Ballwin, MO 63011  
636-227-5333

**FIND NEW ROADS™**

[www.elcochevroletcadillac.com](http://www.elcochevroletcadillac.com)