

12

LANDSCAPE PLAN

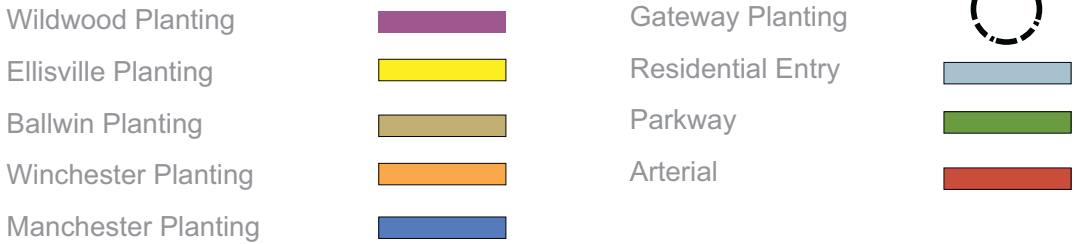
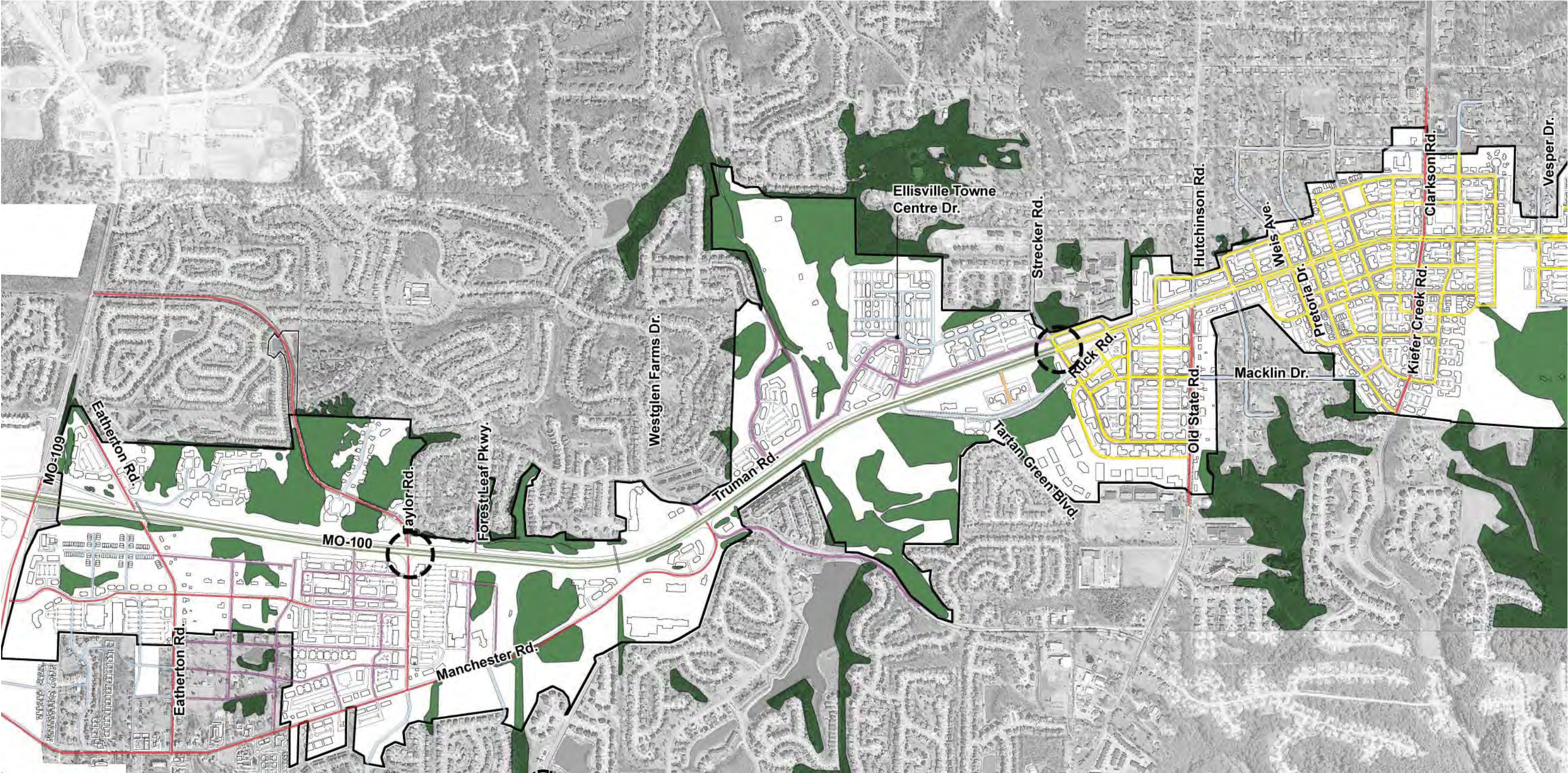
Landscape Plan

The Manchester Road Great Streets Master Plan does not provide specific, detailed design for landscape and streetscape treatments within the study area, but does provide recommendations for general patterns of plantings and trees along various streets throughout the corridor. Careful planting of trees and other vegetation can help enhance the livability and attractiveness of the corridor for residents and visitors and may help enhance the viability of businesses along Manchester Road and various side streets. For example, planting trees that allow drivers to see buildings and signage from the road, even after trees mature, is essential to protecting the retail viability of the corridor. Other types of trees are more appropriate for town center areas or for various side streets. Given Manchester Road's status as a state highway, MoDOT has jurisdiction over plantings and landscape features within the right of way. The Manchester Road Great Streets Master Plan encourages the five communities to work with MoDOT officials to coordinate landscaping strategies and standards for Manchester Road going forward.

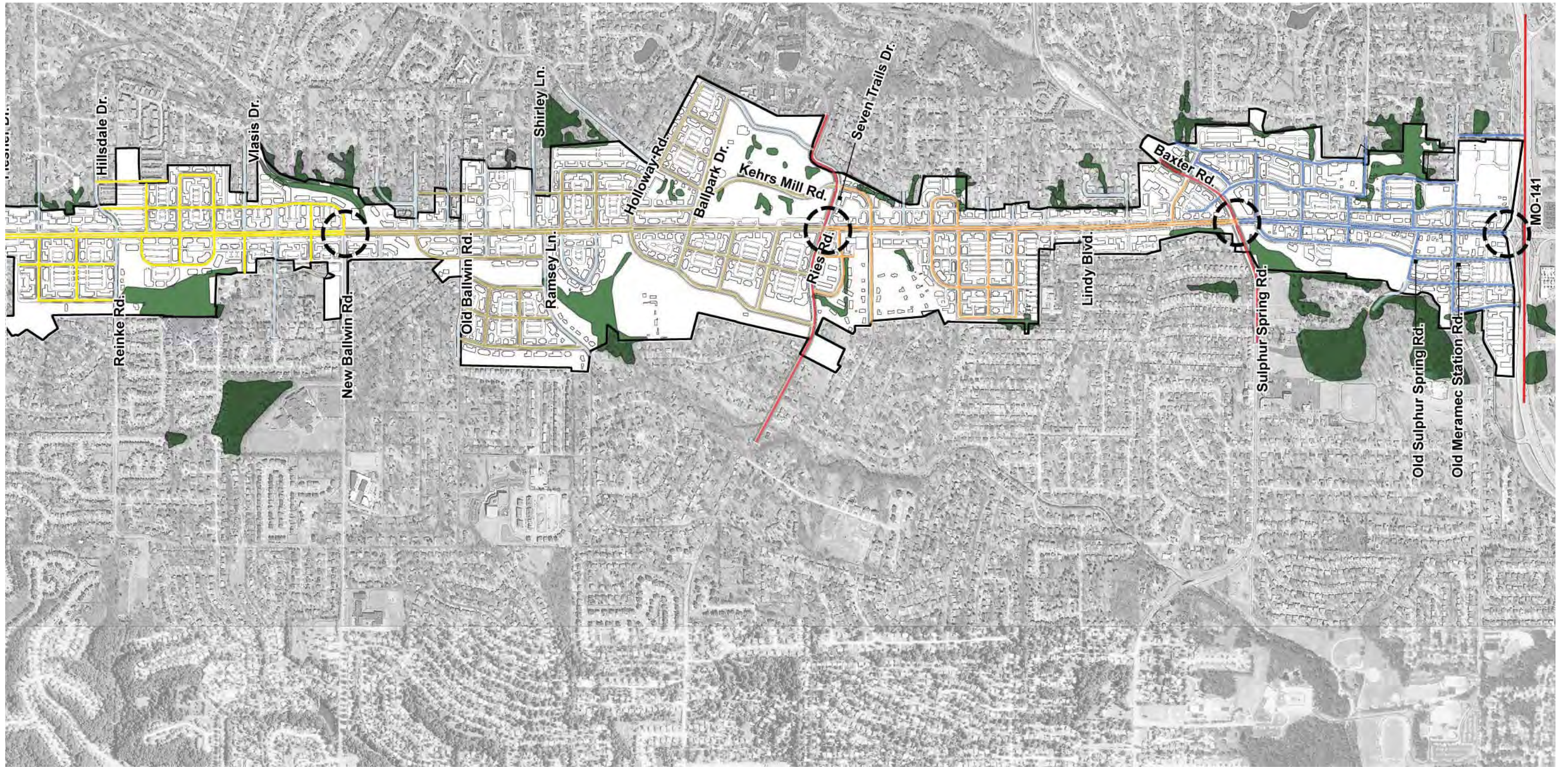
The diagram on the fold-out page contains recommendations for various tree and landscape types for the recommended streets within the Manchester Road study area. The Manchester Road Form Based Code document contains visual representations and additional information concerning the recommended landscapes and the various street types for the corridor.

Furthermore, the master plan recommends that development along the corridor, in town center areas and other districts, include a variety of civic and public spaces to enhance livability and sense of place. A series of parks, greens, squares, plazas, and playgrounds integrated into the town centers and other key development nodes along Manchester Road will help to add character over time. The Manchester Road Form Based Code document contains additional information and images concerning civic spaces along the corridor.

Landscape Concept Plan - Western Segment



Landscape Concept Plan - Eastern Segment



- Wildwood Planting
- Ellisville Planting
- Ballwin Planting
- Winchester Planting
- Manchester Planting

-
-
-
-
-

- Gateway Planting
- Residential Entry
- Parkway
- Arterial

-
-
-
-

