

ISSUE I | VOLUME 6 | FEBRUARY 2022

Ballwin *Life*



PROPOSITION U P. 8
2022 CITY BUDGET P. 10
SUMMER CAMPS P. 24



Our Mission

To protect, inform, and serve our community with diligence, respect, and transparency

Contact Us

[City of Ballwin](#)

(636) 227-9000

www.ballwin.mo.us

[Code Enforcement](#)

(636) 227-9000 *option 3

[Ballwin Golf Course](#)

(636) 227-1750

[Municipal Court](#)

(636) 227-9000 *option 4

[North Pointe Aquatic Center](#)

(636) 227-2981

[Parks and Recreation](#)

(636) 227-9000 *option 6

[Police Department](#)

(636) 227-9000 *option 7

[The Pointe at Ballwin Commons](#)

(636) 227-8950

[Public Works](#)

(636) 227-9000 *option 2

Report an Issue

Issues may be reported online by visiting ballwin.mo.us or by phone.

[Report a Pothole or Street Tree](#)

Contact Public Works

[Report a Code Issue](#)

Contact Code Enforcement

[Report a Tip to Police](#)

Contact the Police Department

To report a crime in progress dial 911

Fire Protection

[Metro West](#)

(636) 458-2100

[West County EMS & Fire](#)

(636) 227-9350

[Monarch](#)

(314) 514-0900

Helpful Numbers

[St. Louis County Main Office](#)

(314) 615-5000

[West County Chamber of Commerce](#)

(636) 230-9900

[Republic Services](#)

(636) 947-5959

[Ameren Missouri](#)

(314) 342-1000

[Spire](#)

(314) 621-6960

[Metropolitan Sewer District](#)

1 (866) 281-5737

[Missouri American Water](#)

1 (866) 430-0820

Future Publications

May 2022

August 2022

November 2022

Ad spaces are available. Email krobinson@ballwin.mo.us to reserve!

MAYOR

Tim Pogue

(636) 207-2386 (3320)

tpogue@ballwin.mo.us

WARD 1

Michael Finley

(636) 207-2386 (3310)

mfinley@ballwin.mo.us

Mike Utt

(636) 207-2386 (3330)

mutt@ballwin.mo.us

WARD 2

Mark Stallmann

(636) 207-2386 (3340)

mstallmann@ballwin.mo.us

Kevin M. Roach

(636) 207-2386 (3350)

kroach@ballwin.mo.us

WARD 3

Frank Fleming

(636) 207-2386 (3370)

ffleming@ballwin.mo.us

Jim Leahy

(636) 207-2386 (3360)

jleahy@ballwin.mo.us

WARD 4

Ross Bullington

(636) 207-2386 (3380)

rbullington@ballwin.mo.us

Ray Kerlagon

(636) 207-2386 (3390)

rkerlagon@ballwin.mo.us

CITY ADMINISTRATOR

Eric Sterman

(636) 227-9000

esterman@ballwin.mo.us

From Your Mayor



Dear neighbors,

On behalf of the City of Ballwin, I want to wish you a very Happy New Year! Every year, our staff works to bring new projects and exciting events to our community, and 2022 is no different.


This year, we will place a continued focus and dedication towards updating our City streets. On page

13, you'll find a list of the approved street and sidewalk projects set to take place during this year's construction season. Additionally, we will resurface our portion of New Ballwin Road - similar to last year's major Holloway Road project. We will fix deteriorated pavement, curbs, and gutters, replace current street lighting with cost-efficient LED lights, and install pedestrian signals. With the help of federal funds, the City will only pay 20% of the total construction cost.

Providing and maintaining quality streets is something the City of Ballwin prides itself on. From snow removal to repairing sidewalks, our Public Works department works hard to make sure you have safe roads to travel on. That's why we set aside a portion of the budget to reinvest in these streets every year. The largest component of the City's budget is the sales tax we receive from our brick-and-mortar Ballwin business. However, more and more sales are starting to occur online, especially over the past two years, which is why Proposition U is an important issue.

On Tuesday, April 5, voters in Ballwin will have the chance to vote on Proposition U. Proposition U is for a local use tax that will apply the City's sales tax rate to purchases made online. Currently, the City receives no sales tax from any online purchases (Amazon, eBay, etc.). The City's local sales taxes are made up of a 0.5 cent parks and stormwater tax, and a 0.5 cent capital improvement tax. As previously mentioned, these taxes make up a significant part of the City's budget and help pay for not only our street and sidewalk repair, but also for our police department, parks and facilities, leaf pickup program, and so much more. More information on Proposition U can be found on pages 8-9 of this edition of the Ballwin Life magazine, as well as on the City's website (www.ballwin.mo.us/Proposition-U). I encourage you to educate yourself on this important topic prior to voting day on April 5th.

I want to thank you for your continued support for our City, local businesses, and your fellow citizens this past year. I wish you and your loved ones a happy 2022!


Tim Pogue

Follow Us:     

Table of Contents

On the Cover

Pictured on the cover is Reagan, a camper from last year's Summer Camp! Learn more about our upcoming Summer Camp program on page 24. Registration officially opens on Tuesday, February 1.



Administration

- 5 Moment in History
- 6 New Business: Panera
- 7 Municipal Election
- 8 Proposition U
- 10 2022 City Budget

Public Works

- 12 Holloway Road Recap
- 13 2022 Street Projects
- 13 New Ballwin Resurfacing

Police Department

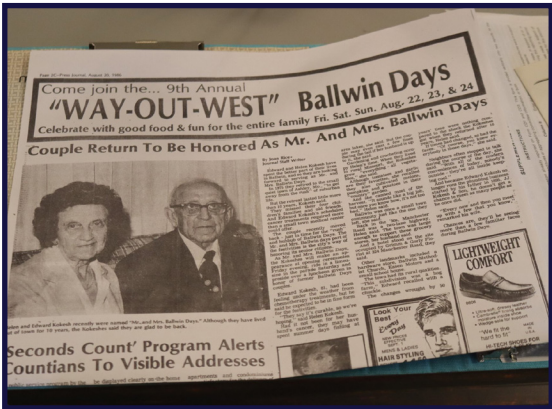
- 14 Chief's Corner
- 15 Lock It or Lose It
- 16 Graduated Driver License
- 17 Mental Health Awareness

Parks & Recreation

- 18 Pointe Information
- 20 Upcoming Programs
- 23 2022 Race Series
- 24 Summer Camps
- 26 Golf Course & Events
- 28 Swim Lessons
- 29 North Pointe Opening
- 29 We're Hiring
- 30 New Ballwin Playground
- 31 Pavilion Rentals
- 31 Calendar of Events

An electronic copy of this issue, and past issues, can be found on our website at ballwin.mo.us.
Questions? Please send an email to krobinson@ballwin.mo.us

Longtime Ballwin resident Gary Carr donated several items to the Ballwin Historical Commission at their meeting on November 9, 2021. The meeting was held in the Old Ballwin School House located at 308 Jefferson Ave, Ballwin, MO. 63021. Among the items donated was a framed newspaper dated 8/25/1938 published by the Community Press. One of the newspaper's cover stories detailed the dedication of the Ballwin Schoolhouse. A whopping \$1.50 would secure two years of renewal with the publication at the time, as listed on the cover of the paper. The schoolhouse was originally located in a portion of Ballwin that is now the Olde Town Plaza.



Love learning about the History of Ballwin? Join the Ballwin Historical Commission! This year, the commission will meet at a new time!

Join us at 6 p.m. on the second Tuesday of every month in the Old Ballwin Schoolhouse, 308 Jefferson Avenue.

All meetings are open to the public. The society's primary function is to promote, educate, and illustrate the history of Ballwin, its exploration, settlement, development, and activities. Please call (636) 227-8950 to learn more about the Historical Commission or email history@ballwin.mo.us.

the **b i z** Spotlight



Panera Bread opened their brand-new Ballwin location last year on November 18, 2021. This location is the first of its kind and boasts an all-new design! The Ballwin Panera is located at 14646 Manchester Road. For current business hours and additional information, you can reach them via phone at (636) 230-6644.

On December 2nd, City staff attended a ribbon-cutting ceremony (pictured below). We are excited to welcome them to our community!



Interested in opening a business in Ballwin? Visit www.ballwin.mo.us/Opening-a-Business/ or contact Planning Technician Shawn Edghill at (636) 227-2243.

Shop Locally. Shop Ballwin.

By shopping in Ballwin, you are giving back to this community! Not only are you helping our businesses thrive, your tax dollars are used to fund our essential services, like police & streets.

Several of the businesses in our community offer a special discount for residents & Pointe members ONLY, to encourage shopping locally. Learn more about the Shop Ballwin First program on our website, www.ballwin.mo.us



Municipal Election

Mark your calendars! The next General Municipal Election is on Tuesday, April 5.

While we've included important election topics below, this information is not exhaustive. For questions, updates, and additional information, you should visit the St. Louis County Board of Elections' website or contact them directly at (314) 615-VOTE or vote@stlouiscountymo.gov.

Registration

Wednesday, March 9 is the last day to register to vote in this election. To register to vote, or to check your current voter registration status, go to www.sos.mo.gov/elections/goVoteMissouri/register. If you wish to vote absentee in this election, more information on this process can be found at www.stlouiscountymo.gov/st-louis-county-government/board-of-elections/ in the Absentee Voting section.

Polling Places

Voters in St. Louis County may vote at any polling place in the County on Election Day. Polling places are open from 6 a.m. to 7 p.m. on Election Day. To find the polling place nearest you, visit www.stlouiscountymo.gov/st-louis-county-government/board-of-elections/ and click on Polling Places.

Sample Ballot

On the St. Louis County Board of Elections' website, you can use the sample ballot feature to see what candidates and issues will be on your ballot. Specific to Ballwin, you will be able to vote for the office of Alderman (one in each ward) and on Proposition U (see pages 8-9).

Student Election Judge Program

The St. Louis County Board of Election Commissioners is accepting applications for High School students who are interested in the Election Board's High School Student Election Judge Program. The Student Election Judge Program gives students an opportunity to work with veteran Election Judges providing hands-on experience in learning how elections are conducted.

To qualify, students must be 15 - 17 years of age, and be in the 10th, 11th, or 12th grade. The Election Board also encourages high school students who are 18+ to apply as regular Election Judges. Interested students can apply by visiting www.vote4stlco.com/pollaccess. Applications must be received in the Election Board's Office by Friday, March 11 for students to work in the April 5th General Municipal Election. Contact Jim McHugh of the Board of Elections at (314) 615-1858 or email Jim at highschoolprogram@stlouiscountymo.gov to learn more.

PROPOSITION U

Local use tax

Vote April 5th

Learn more at
ballwin.mo.us/Proposition-U



✓ What is a local use tax?

A local use tax is a sales tax imposed on the purchase of goods online. If approved, the local use tax rate will mirror the local sales tax rate. Ballwin's sales tax rate is 1 cent.



✓ What's the difference between a sales tax and a local use tax?

Sales tax is charged by local brick-and-mortar stores, while a local use tax would be charged for online sales, such as Amazon. Keep in mind, sales and local use taxes CAN NOT be applied at the same time.



✓ Don't we already pay sales taxes online?

Currently, only the state of Missouri can collect taxes from online purchases. In 2021, the state legislature passed a new law that allows cities to collect taxes from online purchases beginning in 2023, but only if the voters of that City approve a local use tax. See graphic on next page for additional information.



✓ What happens if Proposition U passes?

The City has not levied a property tax in more than 30 years, so sales taxes are the City's primary source of revenue. However, in recent years more and more sales have shifted online. Current estimates indicate online sales represent about 15% of all purchases, and that number is expected to grow in future years. A local use tax will help ensure the City can keep a balanced budget in future years. These funds will be used to invest in City services such as a well-trained police force, street and sidewalk repair, fall leaf pickup, and our many parks and facilities.



✓ What happens if Proposition U fails?

The same law allowing the local use tax collection also gradually reduces another revenue source for the City - cable franchise fees (the tax you pay on your bill for cable services). Between this and the loss of sales tax revenues as more shopping transitions online, the erosion of revenue will challenge the City to maintain current service levels. Furthermore, our local brick-and-mortar stores and businesses that invest in the community will continue to be disadvantaged by the fact that online sales will not have to pay local sales taxes.



✓ What will this issue look like on the ballot?

The ballot language is set by the State and will contain the following language: "Shall the City of Ballwin impose a local use tax at the same rate as the total local sales tax rate, provided that if the local sales tax rate is reduced or raised by voter approval, the local use tax rate shall also be reduced or raised by the same action?"

Do other cities have a local use tax?

Approximately half of all Missouri cities with populations of 2,000 or more already have a use tax in place.

Ballwin is one of many St. Louis entities placing a use tax on the ballot this year. For example, St. Louis County, Ellisville, Chesterfield, Manchester, and Town & Country are each bringing this issue to voters on April 5th.

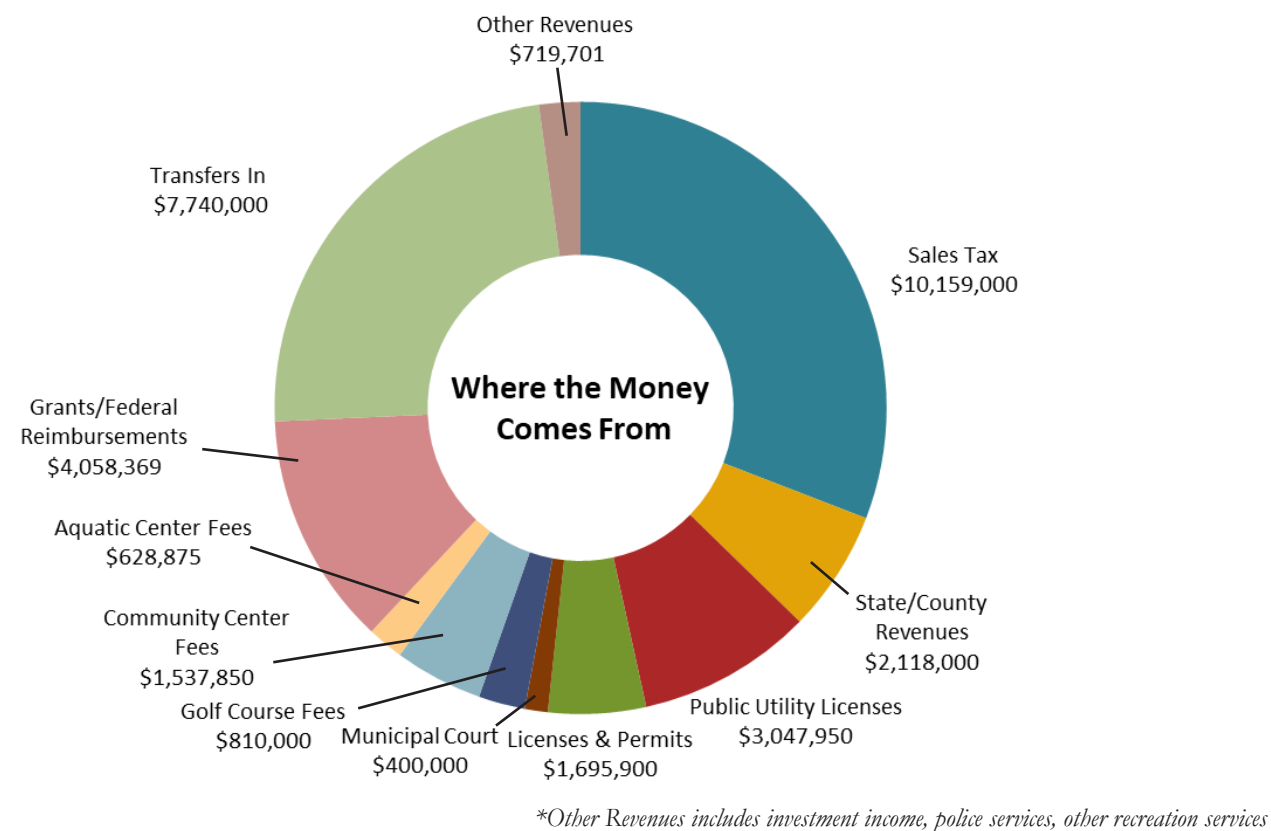


If approved by voters, Ballwin will join more than 200 Missouri cities that currently impose a use tax, including the cities of O'Fallon, Brentwood, Clayton, Crestwood, Des Peres, Hazelwood, Kirkwood, University City, Maplewood, and Frontenac.

2022 City Budget

I am pleased to present the City of Ballwin's 2022 Budget. The budget serves as the City's fiscal plan from January 1, 2022 – December 31, 2022. It includes our goals, objectives, and future financial projections. I've included graphs that show the City of Ballwin's projected revenues and expenditures. To view the budget in its entirety, please visit our Budgets page on the City's website. We are committed to making the budgeting process as open and transparent as possible, so please reach out to the City directly if you have any additional questions or concerns.

- Denise Keller, Finance Officer



Total revenues equal \$32,915,645. Major revenue for the City of Ballwin include sales taxes, public utility licenses, and community programs. The City has \$0 property tax, so it's reliant on the categories included in the chart above. This year, there is also a transfer in of accumulated fund balance amounting to \$7.7 million to fund capital improvements.



SALES TAXES represent \$10.2 million or 31% of General and Capital Fund revenues. Ballwin consumers pay a sales tax rate of 8.738% of which .5% is for Capital Improvements and .5% is for Parks. An additional 1.0% is distributed from St. Louis County. These revenues are highly variable depending on economic conditions.



PUBLIC UTILITY LICENSES represent \$3.0 million or 9% of General and Capital Fund revenues. A gross receipts tax is paid by both public and private utility companies doing business in Ballwin for use of the public right-of-way and is based on operating revenues. These companies generally pass the tax on to their customers.



COMMUNITY PROGRAMS represent \$3.1 million or 9% of General and Capital Fund revenues. Memberships and fees from Ballwin's community center, golf course and outdoor water park generate these revenues. Additional sources include special programs such as race events, community festivals, and facility rentals.

Total expenditures equal \$30,961,223. Police, Public Works, and Capital Improvements make up a significant portion of the City of Ballwin's 2022 Budget.



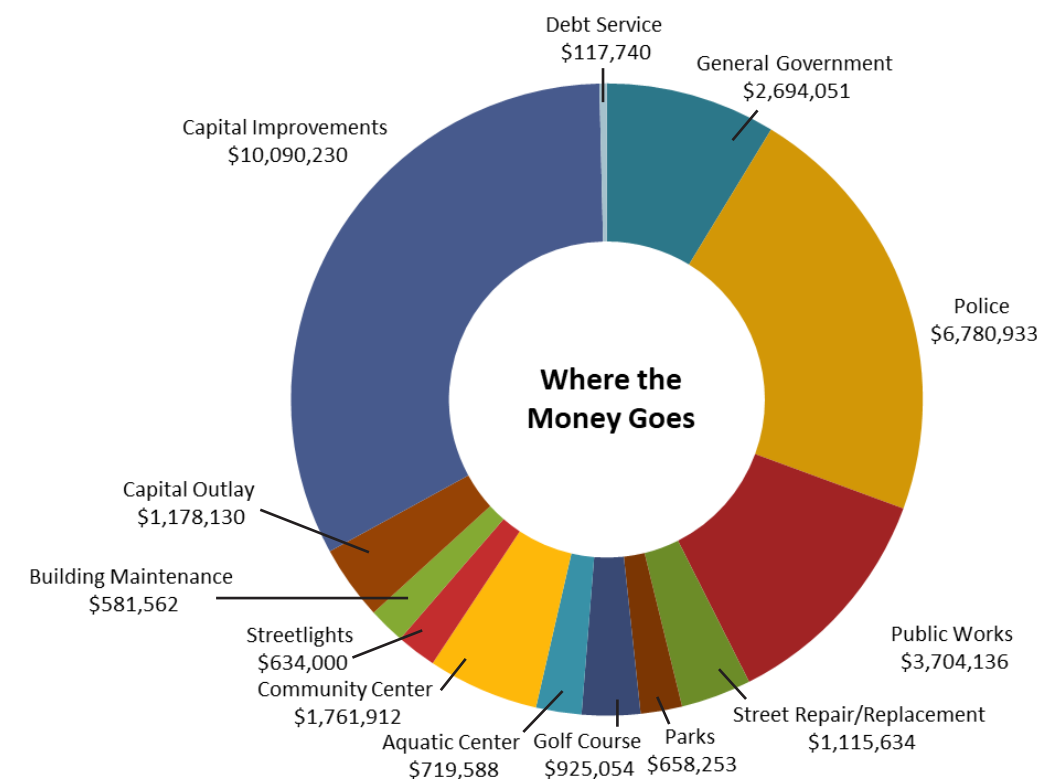
POLICE represents 34% of the General Fund. Included is the replacement of four patrol vehicles and new protective equipment for officers.



PUBLIC WORKS represents 26% of the General Fund and includes road resurfacing, sidewalk repairs, and snow and leaf removal. Trimming and removal of trees in the right-of-way is also performed.



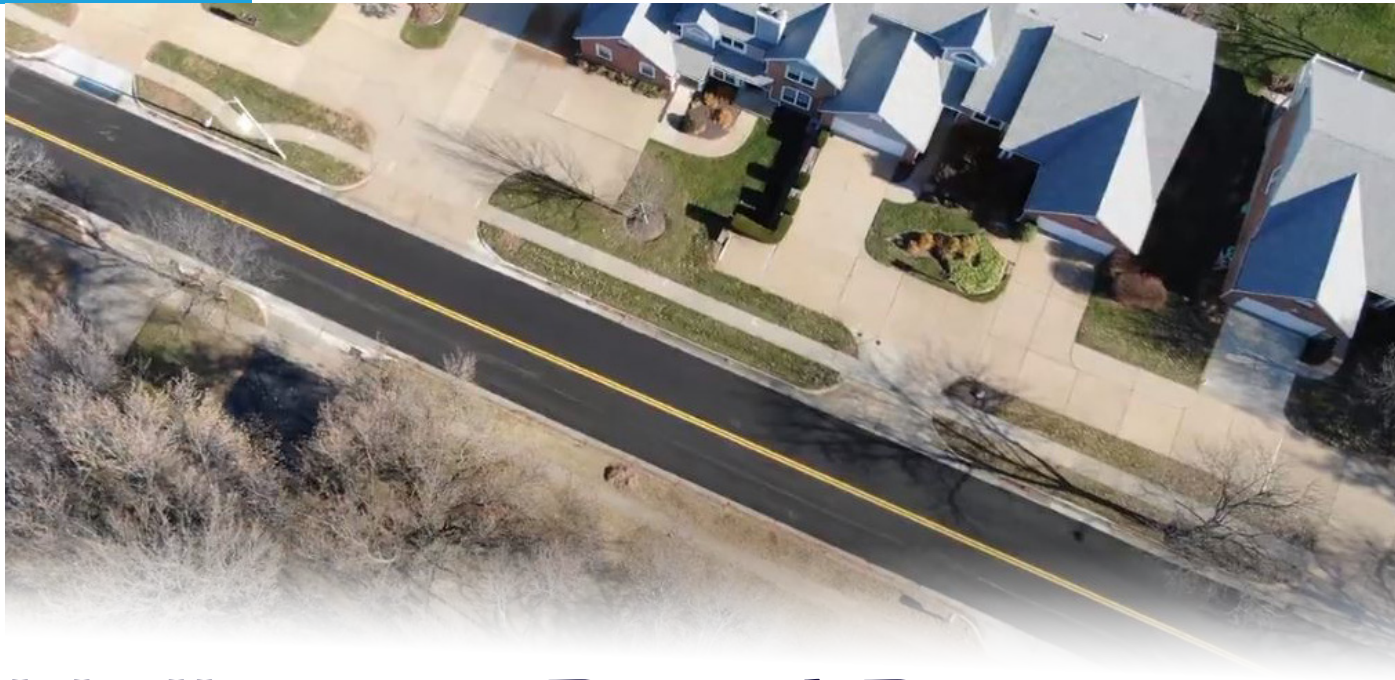
CAPITAL IMPROVEMENTS total \$10.1 million and represent all expenditures for the Capital Fund. Construction of the new police building, resurfacing of New Ballwin Road, and extensive upgrades to Holloway Park are all planned.



Last year, the City of Ballwin was presented with a Distinguished Budget Presentation Award from the Government Finance Officers Association (GFOA) for the 2021 budget. This is the sixth consecutive award for the City. This award certifies Ballwin's budget documents were of the highest quality and rated proficient in serving as: a policy document, a financial plan, an operations guide, and a communications device.

The City of Ballwin's budget document consists of its primary General Fund, a Capital Improvements Fund, and several minor funds such as a Sewer Lateral Fund, Special Allocations (TIF) Fund, TDD Fund, and a Federal Asset Seizure Fund. Every fall, each department drafts an estimate of projects and their expenses to present to the Board of Aldermen for consideration, which they then work to solidify and prioritize the remainder of the year.

To view the complete 2022 Budget, as well as prior year's budgets, visit www.ballwin.mo.us/Budgets/. Here, you will see the full breakdown of the 2022 budget, including the revenues and expenditures for each individual department.



Holloway Road Recap

Last August, the City began a quarter-long resurfacing project on Holloway Road. The project, originally estimated to be completed in December, wrapped up on November 24th. On top of that, since we secured a federal grant for 80% reimbursement, this million-dollar project only cost the City \$231,208.

This project began in 2019, when the City contracted an engineering firm to assess the major roadway for any issues and identify areas for improvements. Once the engineering portion was complete in 2020, it was determined the pavement, curb, and gutters on Holloway Road had seriously deteriorated. In 2021, the City hired Krupp Construction to make improvements to the roadway by resurfacing the entire stretch from Manchester Road to Baxter Road.

The project not only resulted in a smoother drive, it also reduced liability from tripping hazards, and brought the entire roadway into compliance with federal regulations. After the project was completed, the Missouri Department of Transportation (MoDot) did a thorough walk-through of the recently-resurfaced road alongside our staff and found no issues! Check out the before (top) and after (bottom) pictures on the right.



2022 Street Projects

During the December 13, 2021 Board of Aldermen Meeting, the City's 2022 Budget was approved by the Board. You can find an overview of the budget on page 10 of this issue, but to view the document in its entirety, visit www.ballwin.mo.us/Budgets/. In the full document, you will find a list of all our planned street and sidewalk improvement projects for 2022 on page 122. The City is looking to invest a little over \$1 million into our streets, so we can provide safe roadways to travel on. These projects are scheduled to begin during the department's construction season, which usually takes place in the summer when school lets out.

Slabs, curbs, and gutter improvements will be made to the following streets: Sunfield Place, Ballwin Commons Drive (curbs only), Lucerne Crossing Court, Oakmont Farm Drive, Columbard Drive, Lering Drive, Eagles Chase Court, Maymont Drive, Stors Mill Court, Windsor Mill Drive, Castle Ridge Drive, WestGlen Village Drive, and Alverston Court.

Additionally, the department will complete milling and repaving projects on the following streets: Ballwin Commons Drive, Hickory Tree Court, Hickory Tree Lane, Ballpark Drive, Lindell Drive, Sudbury Lane North, Stors Mill Court, Windsor Mill Drive, and Jares Court.

New Ballwin Road (2022)

We also received federal funding to resurface our portion of New Ballwin Road (pictured on right) from Manchester Road to Twigwood Drive (the portion of New Ballwin Road directly south of Twigwood Drive is maintained by St. Louis County). This resurfacing will address

deteriorated pavement, curbs and gutters, ADA ramp replacements, and upgrades to the intersection pedestrian signal. It also includes 25 new LED streetlights that will belong to the City. Total expense is budgeted at \$873,204, but with federal reimbursement of 80% of the construction expenses, the net cost to the City is \$220,341.



Ries Road (2024)

We are excited to announce the City was approved to receive federal funding for the resurfacing of Ries Road. Construction is scheduled to take place in 2024. We will begin the engineering portion of the project this year, at a cost of \$85,577.

You can learn more about both of these projects online by visiting www.ballwin.mo.us/Public-Works-Projects/.

Chief's Corner



Next time you see an officer drive by, I want you to think about what that officer did to get ready for his or her day on patrol. It is not as simple as pinning on a badge and grabbing a set of keys.

What most people are not aware of, is the preparation a police officer goes through at the beginning of their shift. They are about to face 12 hours of handling an unpredictable plethora of incidents, and they have to be prepared for each of them.

First, of course, is putting on the uniform. This uniform includes all the equipment they wear: pistol, ammunition magazines, expandable baton, pepper spray, handcuffs, flashlight, taser, tourniquet, radio, and body armor. All of this weighs about 30 pounds.

Then comes roll call. This includes the review of all the incidents that occurred during the prior shift. It is important to know what took place because many incidents are ongoing and may need to be addressed again. Also at roll call, each officer is given their individual assignments. This includes the sector they will be patrolling for the next 12 hours, along with items specific to that sector. These include traffic enforcement locations and security checks of businesses and vacant homes.

After roll call, the officer is issued a case that contains a digital camera, an Automated External Defibrillator (AED), and Narcan (to treat those experiencing suspected opioid overdoses). The officer is also issued a patrol rifle that they will put in a locking mount in the patrol car.

The officer then does a full inspection of the patrol vehicle. This inspection includes noting the condition of the interior and exterior of the vehicles, and an inventory and inspection of all equipment to include the fire extinguisher, the metal detector, the mobile data terminal (the vehicle laptop), the ticket printer, radar unit (which must be tested at the beginning of each shift using tuning forks), additional body armor, ballistic helmet, first aid kit, and the lock-out tool used for opening car doors when the owner has locked the keys inside.

The officer then needs to log into the computer and all the programs he or she will use throughout the shift.

As you can see, there is a lot that goes into preparing for a single shift. What is not listed is the personal preparation. This includes being mentally and physically prepared for whatever that shift will throw at them. This is probably the most important part besides making sure they hug their family as they leave the house.

- Chief Schaeffler

Lock It or Lose It



In 2021, Ballwin Police heavily promoted the Lock it or Lose it campaign, also known as the #9PM Routine. Car clouting is a common crime in the St. Louis area that requires your help to prevent it. For those who are unsure what car clouting is, it's typically conducted late at night or in the early hours of the morning. A person(s) will sneak around the neighborhood, checking vehicle door handles. If the person(s) finds a vehicle unlocked, they will rummage through the interior and any belongings left inside.

By leaving your vehicle unlocked, the person has access to potentially personal documents, purses, money, firearms, garage door openers, and possibly the car keys. Every so often, the vehicle could be in-range of a key fob and will start. Just this last year, Ballwin PD responded to 62 reported car cloutings.

Within those reports, there were 18 stolen autos, three stolen firearms, and multiple reports for miscellaneous stolen property. Fortunately, this is a heavy decrease in reported car cloutings in Ballwin since 2020. We will continue to push the Lock It or Lose It campaign, and with your help, we look forward to continuing to see a decrease in this preventable crime.

HUFFMAN
Jewelers

\$7
WATCH BATTERY
(WATCH W/ SCREWS \$8) Excludes Invicta.
With coupon. Expires 06/30/22.

APPRAISALS - JEWELRY REPAIR - WATCH REPAIR
14740 Manchester Rd. • (636) 227-1211

Graduated Driver License

There are common misunderstandings for many in the Missouri's Graduated Driver License Program. These license restrictions may seem like a waste, but they are put in place for safety. This program became law in 2001 due to Missouri teens being over represented in traffic crashes. The program is designed to increase the training received by young or inexperienced drivers.

A person can receive an instruction permit once they have turned 15 years old. While maintaining that permit, you may only drive when accompanied by a licensed driver. The licensed driver can either be a parent, grandparent, an authorized instructor, or someone over the age of 25 (with three or more years of driving experience and written permission).

The second phase is the intermediate license. This phase contains multiple stages of restrictions. During the first six months, you may not operate a vehicle with more than one (1) passenger who is under 19 years old and who is not a member of your immediate family. After six months, you may not operate a vehicle with more than three (3) passengers who are under 19 years old and who are not members of your immediate family. While maintaining an intermediate license, you may not drive from 1 a.m. to 5 a.m. except for school activity, job, or for an emergency, unless accompanied by a licensed driver 21 years old or older.



Steve Martinez Ins Agcy Inc
Steve Martinez, Agent
104 Holloway Road
Ballwin, MO 63011
Bus: 636-227-7888

Thanks, Ballwin Residents.

I love being here to help life go right™ in a community where people are making a difference every day. Thank you for all you do.



1601485

State Farm, Bloomington, IL

In order to graduate to an Under-21 Full Driver License, your driving privilege cannot be suspended, revoked, or denied at the time of application and you may not have had any alcohol-related offenses or traffic convictions within the last 12 months.

Remember, the primary goal of these restrictions is for the safety of all occupants. Requiring safety belts for drivers and occupants and limiting the number of non family passengers has led to decreases in traffic crashes involving young drivers. This program ultimately relies on our young drivers and their families to practice safe driving at all times in order to ensure that all on our roadways are safe.

To review the Missouri Graduated Driver License (GDL) Law, visit dor.mo.gov/driver-license/issuance/graduated-driver-license/details.html

Mental Health Awareness

Winter is here! The cold, dark, gloomy, and sunless days are in full swing. Sorry to make this start off dark, but for those exact reasons, mental health awareness needs to be at its highest. With the influx of freezing cold temperatures and earlier sunsets, physical interaction with people tends to decline. Many studies have been done showing that the combination of lack of social gatherings and cold weather can lead to depression.

For some people, once the weather has passed and spring arrives, they are able to bounce back. For those who seem to be struggling, or know of someone who is struggling, we would like to share a few key resources that can assist you in getting through this tough time.

The first resource is the Ballwin Police Department. Nearly all Ballwin Officers are a part of the Crisis Intervention Team, also known as CIT. CIT is a training program for officers, which focuses on de-escalation techniques that increase overall chances of a safe and effective outcome for those in crisis. The training consists of recognizing the signs and symptoms of mental illnesses and steps to direct the individual in need with professional resources that can help.

One of the primary resources to which Ballwin Officers will refer people is Behavioral Health Response (BHR). BHR is a crisis support division that is staffed 24/7. A second resource is National Alliance on Mental Illness (NAMI). NAMI's website contains multiple resources. They are available by phone and email.

Once a call is completed, an officer will complete a CIT report, which gets reviewed by our lead CIT officer. The officer will get in contact with additional services if needed, and conduct follow ups with the person. The officer will be assisted by a designated Community Mental Health Liaison from one of these services during the additional follow up. This allows for both parties to see the initial progress of assistance, and if needed can come up with a plan for additional services.

If you or anyone you know is struggling, please contact one of the previously-mentioned sources or the Ballwin PD. We are happy to assist those in need for a better outcome. For any additional information, please look at the picture (see right) where various websites and numbers can be located.



Information

#1 Ballwin Commons Circle
Ballwin, MO 63021
(636) 227-8950

Hours of Operation

Monday - Friday 5:15 a.m. - 9 p.m.
Saturday 7 a.m. - 4 p.m.
Sunday 7 a.m. - 4 p.m.

Holiday Hours

February 21 5:15 a.m. - 9 p.m.
April 17 Closed

Pointe Play Center* (3 months - 10 years)

Monday - Saturday 8:30 a.m. - 12 p.m.
Monday - Thursday 5 - 7:30 p.m.
*\$4/child (max. stay two hours).

20-Visit Swipe Cards

Youth, 3 - 18	\$110	\$170
Adult, 19 - 61	\$130	\$170
Senior, 62+	\$110	\$170
Hero	\$40	\$60

Memberships

See table on the next page for our current membership rates. To receive Resident rates, you must have a current Resident ID Card. If a card is needed, bring a utility bill to The Pointe's welcome desk. Additional information:

- 1) Monthly options involve a \$20 activation fee.
- 2) Family memberships may include children living at home through the age of 23, and may not have more than two adults per household.
- 3) Senior Couple memberships only require one person be 62 or older.
- 4) Hero (Police, Fire, EMS, Veterans, and Active Military) memberships are only available for individuals.

Fitness Center

The Pointe is home to a state-of-the-art fitness center including a full-service cardio section, Cybex circuit, and free-weight area. Whether your goal is to find a gym to help you build strength, lose weight, or just have a safe place to walk on an indoor track near your home, join us at The Pointe.

Indoor Pool

The indoor pool at The Pointe features three lap lanes, a two-story water slide, an indoor water playground, lazy river, and vortex. The Pointe offers swim lessons, water aerobics, and more. Please review the Indoor Pool Schedule on our website to ensure the pool is open for the purpose you wish to use it.

Fitness Classes & Personal Training

Our fitness center offers a number of different classes available to both patrons and guests. Group Fitness classes are included with any membership. They are provided on a first-come, first-served basis and do not require registration. Visit the Fitness Center page on our website for more information or to view the current Group Fitness and Spinning Class Schedules.

The Pointe has five personal trainers on staff to help you reach your fitness goals. If you want personalized, one-on-one attention to keep you safe and accelerate your fitness progress, consider working with one of our certified trainers.

Residents	Pointe Monthly*	Pointe Yearly	Platinum Monthly*	Platinum Yearly	Annual Pool Pass	Pointe Daily Visit
Youth (3-18)	\$20	\$216	\$33	\$372	\$97	\$6
Adult (19-61)	\$33	\$372	\$49	\$564	\$125	\$7
Senior (62+)	\$19	\$204	\$36	\$408	\$97	\$6
Senior Couple*	\$26	\$288	\$46	\$528	\$153	N/A
Single+ One	\$41	\$468	\$71	\$828	\$205	N/A
Family*	\$46	\$528	\$78	\$912	\$239	N/A
Hero*	\$19	\$204	\$36	\$408	\$97	\$5

Nonresidents	Pointe Monthly*	Pointe Yearly	Platinum Monthly*	Platinum Yearly	Annual Pool Pass	Pointe Daily Visit
Youth (3-18)	\$31	\$348	\$46	\$528	\$153	\$9
Adult (19-61)	\$50	\$576	\$70	\$816	\$216	\$9
Senior (62+)	\$32	\$360	\$50	\$576	\$153	\$9
Senior Couple*	\$43	\$492	\$66	\$768	\$233	N/A
Single+ One	\$63	\$732	\$84	\$984	\$341	N/A
Family*	\$70	\$816	\$100	\$1,176	\$364	N/A
Hero*	\$32	\$360	\$50	\$576	\$153	\$8

*See memberships section on the previous page for more details

Membership Specials

February

Personal Training - 5% off of 5 visits, 10% off 10 visits, and 15% off 20 visits.

Visit Card Class Special - Receive two (2) additional visits for each card purchased.

Early Bird Pool Passes - Get 10% off your North Pointe summer pool pass.

March

Commit To Be Fit - Get 10% off when you purchase an annual Platinum or Pointe membership. Not valid on debit memberships.

Early Bird Pool Passes - Get 10% off your North Pointe summer pool pass.

April

Commit To Be Fit - Get 10% off when you purchase an annual Platinum or Pointe membership. Not valid on debit memberships.

Early Bird Pool Passes - Get 10% off your North Pointe summer pool pass.

Junior Golf and Swim Passes - Get unlimited use at both North Pointe and the Ballwin Golf Course (beginning May 1).

Parks & Recreation Programs

VIP pricing is given to Ballwin Residents with a current Parks & Recreation Resident ID card & individuals with a Platinum or Pointe membership. Regular pricing is given to anyone without a membership or valid Parks & Recreation Resident ID card. To learn more about Parks & Recreation Resident ID Cards, visit www.ballwin.mo.us/Resident-ID-Cards/ or call (636) 227-8950.

Tiny Toes Dance

Tiny Toes Dance class is geared for children 18 months to 3 years who are ready to dance without mommy or daddy beside them. It focuses on ballet and some tap, and we introduce the dance technique and styles in a fun, positive, and encouraging way. In this class, we use many props and familiar songs, as well as our Tippi Toes music, to keep children engaged. Register online at www.tippitoesdance.com/st-louis.

Days: Th
Time: 5:30 - 6 p.m.
Fee: VIP/Reg \$50 per month
Ages: 1.5 - 3
Location: The Pointe

Ballet, Tap & Jazz Combo

The Ballet, Tap & Jazz class for 4-7 year olds incorporates all three techniques while also encouraging self-expression and creativity. High-energy music is used throughout the class to get dancers moving and having fun! Register online at www.tippitoesdance.com/st-louis.

Days: Th
Time: 6:15 - 7 p.m.
Fee: VIP/Reg \$60 per month
Ages: 4 - 7
Location: The Pointe

Hip Hop Dance

Using popular and current music, the students start learning dances and choreography quickly as well as learning various dance elements. This version of hip hop/jazz dance is extremely tasteful and clean, and our priority is offering age-appropriate material. Register online at www.tippitoesdance.com/st-louis.

Days: Th
Time: 7:15 - 8 p.m.
Fee: VIP/Reg \$60 per month
Ages: 6 - 12
Location: The Pointe

Lunch and Bingo

Join us for lunch, fun, BINGO, and prizes on the first and third Wednesday of the month. We will play six rounds of Bingo followed by lunch and dessert, and then, play six more games of Bingo. Pre-registration is required by the Monday prior to the event.

Dates: Feb. 2, Feb. 16, March 2, March 16, April 6, and April 20
Time: 11 a.m. - 1 p.m.
Fee: VIP/Reg \$8
Ages: 21+
Location: The Pointe

Pickleball Round Robin

Advanced Beginner - Sign up for an afternoon round robin. You need to sign up to play and there is a ten player maximum. See Intermediate information on next page.

Dates: Feb. 3, March 3, and April 7
Time: 12 - 2 p.m.
Fee: VIP/Reg \$5
Ages: 21+
Location: The Pointe

Basic Training

Attention!! There are no 'at ease' moments in this six week, 24-class bootcamp style class. Each class features 25-40 minutes of calisthenics/drills followed by a class run/jog. Open to all fitness levels, this class is sure to get your day kickstarted.

Dates: Feb. 21 - March 31 April 11 - May 19
Days: Mondays - Thursdays
Time: 5:45 - 6:45 a.m.
Fee: VIP \$129, Reg \$149

Ages: 14+
Location: The Pointe

Group Pickleball Clinic

Join our instructor Martha Roper for a three-week skill building clinic! Sessions for both advanced beginners and intermediate players are available. Clinics will focus on general skills such as dinking, ground strokes, serving, returning, and 3rd shot drops. Drills and games will be included. The intermediate clinic will work on the basics as well as add strategy and harder drills. No class March 21st.

Dates: Feb. 7 - 21, March 7 - 28, and April 4 - 18
Time: 1 - 2 p.m. (Beg.) 2 - 3 p.m. (Int.)
Fee: VIP \$70, Reg \$80
Ages: 10+
Location: The Pointe

Mother Son Dance

We have all heard of Daddy Daughter Dances, but moms we want you to join in on the fun. Bring your handsome little gentlemen for a night full of music, dancing, snacks, pizza, and a dessert. Each participant needs to register. The registration deadline is Sunday, January 30.

Date: Saturday, February 5
Time: 6 - 8 p.m.
Fee: VIP \$10, Reg \$12
Ages: 3+
Location: Golf Course

Daddy Daughter Dance

The sweetheart in your life is ready for a special evening! Daddy and Daughters will enjoy a night full of music, dancing, snacks, pizza and dessert. Each participant needs to register. The registration deadline is Sunday, January 30.

Date: Friday, February 4
Time: 6 - 8 p.m.
Fee: VIP \$10, Reg \$12
Ages: 3+
Location: Golf Course

Fish Tales

Looking for a fun way to spend your late morning with your toddler? Join us at The Pointe for story time, a craft/experiment, and a light snack. Finish the morning with swimming at our Little Splashers pool time! Guardians must accompany their child for the entire time of the program, including being in the water actively supervising their child in Little Splashers. This program will meet on the second and fourth Thursday of the month. Dates are as follows: February 10, February 24, March 10, March 24, April 14, and April 28.

Dates: See above
Days: Thursday
Time: 9:30 - 11:30 a.m.
Fee: VIP \$8, Reg \$10
Ages: 0.5 - 5
Location: The Pointe

Ignite: Pool Party

NO PARENTS ALLOWED! We will have a blast eating, swimming, and playing pool volleyball/basketball. Pizza, drinks, and desserts will be provided. Pre-registration required online or at The Pointe. Day of registration will not be taken. Please bring a swimsuit and towel.

Date: Friday, February 11
Time: 6 - 8:30 p.m.
Fee: VIP \$10, Reg \$12
Ages: 10 - 13
Location: The Pointe

LOAP

Are you interested in making new friends, hearing great speakers, attending exciting day trips, or playing BINGO? If you are 55 or older, LOAP is a great group for you to join. Meetings run through May on the second and fourth Mondays of the month. Free coffee, tea, soda, and desserts are provided. Bring a sack lunch and \$2 to each meeting. Pre-registration is not required.

Dates: Feb. 14, Feb. 28, March 14, March 28, April 11, and April 25
Time: 10 a.m. - 1 p.m.
Fee: VIP/Reg \$2
Ages: 55+
Location: Golf Course

Taekwondo

Beginner & Intermediate
Students learn respect, responsibility, and discipline in addition to basic hand and foot techniques. A uniform is purchased from the instructor.

Dates: Feb. 16 - March 23 March 30 - May 4
Days: Wednesdays
Times: 6:30 - 7:30 p.m. (Beg) 7:30 - 8:30 p.m. (Int)
Fee: VIP \$54, Reg \$78
Ages: 6+
Location: The Pointe

Pickleball Round Robin

Intermediate - Sign up for an afternoon round robin. You need to sign up to play and there is a ten player maximum.

Dates: Feb. 17, March 17, and April 21
Time: 12 - 2 p.m.
Fee: VIP/Reg \$5
Ages: 21+
Location: The Pointe

Silly Sledding

Dress warm, dress right, dress silly. Join us for an afternoon of music, fun, and sledding in Vlasis Park. No Snow? Come out and try racing down the hill on an ice block! Contests will include farthest sled distance, silliest outfit, silliest sled and more! All participants must register for this event.

Date: Saturday, February 19
Time: 1 - 3 p.m.
Fee: VIP/Reg Free
Ages: All
Location: Vlasis Park

Intro to Watercolors

This six-week course will meet on Mondays and is designed for beginners to introduce painting skills, learn new watercolor techniques, and gain the confidence you will need to become an independent watercolor painter. A supply list will be provided after registration and supplies may be purchased through the instructor. Join us for a safe, fun way to socialize and practice a lifelong skill.

Dates: March 7 - April 18
Days: Mondays (no class 4/4)
Time: 10 a.m. - 12 p.m.
Fee: VIP \$110, Reg \$125
Location: The Pointe
Ages: 18+

Continuing Watercolors

This six-week course will meet on Mondays and is designed for artists to expand their skills, learn new watercolor techniques, and gain the confidence you will need to become an independent watercolor painter. A supply list will be provided after registration and supplies may be purchased through the instructor. Join us for a safe, fun way to socialize and practice a lifelong skill! We recommend taking the Intro to Watercolor class first.

Dates: March 7 - April 18
Days: Mondays (no class 4/4)
Time: 6 - 8 p.m.
Fee: VIP \$110, Reg \$125
Location: The Pointe
Ages: 18+

Family Glow Bingo

Wear bright colors, and bring your glow sticks for a family glow Bingo Night! Price includes bingo supplies, prizes, pizza, snacks, dessert, and refreshments.

Date: March 18
Time: 6 - 7:30 p.m.
Fee: VIP \$7, Reg \$8
Ages: 3+
Location: The Pointe

Adult Volleyball

Join this fun group of coed, recreational level teams. Matches will be played at 6:30, 7:30, or 8:30 p.m. on Friday nights and will consist of three games with a one-hour time limit. Teams will be seeded according to win/loss record for a single-elimination tournament at the end of the season.

Dates: March 18 - May 6
Days: Fridays
Time: 6:30 - 9:30 p.m.
Fee: VIP \$140, Reg \$160/team
Ages: 18+
Location: The Pointe

Spring Break Camp

Spend spring break at The Pointe! Children will participate in themed days that include sports, arts and crafts, games, swimming, and more. Be sure to bring a lunch, swimsuit, and towel.

Dates: March 21 - 25
Time: 7 a.m. - 4 p.m.
Fee: VIP \$140, Reg \$160
Ages: 5 - 13
Location: The Pointe

Junior Lifeguard Camp

Have you ever wondered what it's like to be a lifeguard? Take a walk in their flip flops for a week and see what it's all about at our Junior Lifeguard Camp. Designed for ages 8-14, your camper will learn valuable lifeguard skills such as water rescues, CPR, and first aid all while having fun and making new friends! Camp will be led by our American Red Cross certified Lifeguard Instructors. Please have lunch before camp starts as lunch will not be provided. Send your camper with a non-perishable snack daily, swimsuit and towel, and a full change of clothes and tennis shoes. Campers will not receive a lifeguard certification for this camp.

Dates: March 21 - 25
Time: 12 - 4 p.m.
Fee: VIP \$180, Reg \$200
Ages: 8 - 14
Location: The Pointe

Outdoor Art

Let nature be your inspiration as you explore, create and design different kinds of art. Using different art mediums learn how nature can inspire your creations. We'll focus on how nature has been used in architecture, how light can completely transform a piece and how materials found in nature can be incorporated into designs. At the end of this program you'll know how to view nature with an artist's eye.

Date: Saturday, April 16
Time: 1 - 3 p.m.
Fee: VIP \$15, Reg \$18
Ages: 8 - 12
Location: The Pointe

Rock N Roll Bingo

Come out and support Ballwin Parks and Recreation at the Third Annual Rock N Roll Bingo! Do you consider yourself a music expert? Apply that knowledge to the rapid fire song clips that replace traditional letters and numbers on your bingo card. Register (table of eight) through April 6th. Individual registration (\$25) open through April 6th. Beer and soda are provided. A cash bar is available for other drinks and bring your own snacks.

Date: Friday, April 8
Time: 7 p.m. (doors at 6 p.m.)
Fee: VIP/Reg \$160/table
Ages: 21+
Location: The Pointe

Investigate Outdoors Series

Get outside and investigate nature! Let our experienced instructor Jill Wider take you on an adventure you will not forget. Practice survival, get crafty, investigate the forest, and start learning in the outdoors while having fun! All programs are designed with social distancing in mind, each participant gets their own equipment and EVERYTHING is disinfected between classes.

Tuesday, March 22 - Crafty Creations: Tie-dye, leatherwork, outdoor creations, and so much more! Try out all of our amazing outdoor crafts!

Wednesday, March 23 - Tracks, Scat, and Forests: Is that an animal track? What is scat? Learn about Missouri animals while exploring outdoors with these hands-on experiences!

Thursday, March 24 - Shelter Building & Survival Fires: Learn what it takes to safely and effectively start your own fire. You won't want to miss this class as we cook s'mores and other treats with our fires! Could you survive in the woods? Get your hands dirty and experiment building shelters and learning survival techniques in the woods.

Friday, March 25 - Full "STEAM" Ahead: Practice "STEAM" concepts in the outdoors by building rafts, building bridges, breaking eggs, and more!

Times: 9 a.m. - 12 p.m.
or 1 - 4 p.m.
Fee: VIP \$15, Reg \$18/class
Ages: 5 - 12
Location: Ferris Park Pavilion

Adaptive Youth Egg Hunt

Registration is not required. We will be offering a non-competitive accessible egg hunt to service children who have sensory, fine motor, and gross motor special needs. A field consisting of hard and soft surfaces will be used for our hunt area.

Date: Saturday, April 9
Time: 9 a.m.
Fee: VIP/Reg Free
Ages: 2 - 10
Location: Vlasik Park

Underwater Egg Hunt

Join us for a pool egg hunt! Grab your swimsuit and towels and get ready to hunt underwater for eggs. Children will have the opportunity to win awesome prizes and candy. After the hunt, kids can swim and listen to the latest tunes. Swimmers, please check in at the front desk between 5:30 - 5:50 p.m. Parents, if you are planning to stay, please watch the activities from the observation deck or designated area. Age 8-10 group will start at 6 p.m. and 11-14 years old will start at 6:15 p.m.

Date: Saturday, April 9
Time: 6 - 8 p.m.
Fee: VIP \$8, Reg \$10
Ages: 8 - 14
Location: The Pointe

Youth Egg Hunt

Ballwin Parks and Recreation is proud to present the 2022 Youth Easter Egg Hunt. The hunt will take place at Vlasik Park beginning at 10 a.m. SHARP! The Easter Bunny will be on hand for pictures so make sure you bring your camera! Registration is not required.

Date: Saturday, April 9
Time: 10 a.m.
Fee: VIP/Reg Free
Ages: 2 - 7
Location: Vlasik Park

Pickleball Clinic for Kids

Now is your opportunity to learn how to play the sport sweeping the nation. Whether you have never heard of pickleball or played in a match or two, come join us to improve your skills. Local Ballwin Pickleball players will teach kids the basics of the sport. Learn how to keep score, serve and rally back and forth. If time allows kids will participate in a match. Pickleball Paddles will be provided.

Date: Saturday, April 30
Time: 1 - 3:30 p.m.
Fee: VIP \$5, Reg \$8
Ages: 8 - 18
Location: New Ballwin Park

SilverSneakers Classic

The Pointe offers SilverSneakers Classic! You are not required to be a SilverSneakers member to attend. Max 30.

Days: Tu, W, F
Time: 9 - 10 a.m.
Fee: VIP/Reg Free
Ages: All
Location: The Pointe

Challenge yourself, your family, and your friends with the Ballwin Race Series! The series of five different races offers a variety of events for everyone to enjoy. Our first race, the Upside Down Indoor Triathlon, has passed, but it's not too late to start earning points! Whether you're an avid racer, or a beginner wanting to try something new - one of our remaining 2022 races will be perfect for you! Visit www.ballwin.mo.us/Ballwin-Race-Series-1/ to learn more about the races listed below, including course maps, locations, and registration.

Ballwin Triathlon | Sunday, July 17

The Ballwin Triathlon is a 300-yd. swim, 9-mile bike, and 3.4-mile run. This race is very popular and fills up to capacity of 300 participants almost every year. Be sure to secure your spot early!

Ballwin Days 5K and 1 Mile | Sunday, August 21

Kick off the last day of the Ballwin Days Festival with a competitive 5K and/or 1-Mile Run. Adults and children alike are welcome to run in either or both races.

Kids' Triathlon | Sunday, September 18

Kids get the opportunity to experience a triathlon in this scaled down race. Kids ages 5-8 complete a 25-yd. swim, 1-mile bike, and 0.5-mile run. Kids ages 9-12 complete a 75-yd. swim, 2-mile bike, and 1-mile run.

Moonlight Howl 5K | Friday, October 28

Come howl at the moon at The Howl 5K. The Howl 5K run/walk is encouraged to all ages and fitness levels.

A portion of each race entry benefits the Ballwin Parks and Recreation Scholarship Fund. The purpose of the program is to ensure more kids get to enjoy the great amenities and programs offered in Ballwin, regardless of their financial limitations.



2022 Race Series

Ballwin Summer Camps

If you’re looking for a safe, affordable, convenient, and FUN place for your child this summer, look no further than the City of Ballwin! This year's theme is Ballwin United!



Registration officially opens on Tuesday, February 1, 2022. You can register online at ballwin.mo.us/summercamps or in person at The Pointe. Use the QR Code below to view our 2022 Summer Camp Guide. Registration closes at midnight the Monday before your camp selection is scheduled to begin. Space fills up quickly, so register before it's sold out!

Information on our weekly camps can be found below, but check out the Master Camp List (p. 25), which includes all camps offered, dates, field trips, and more. **Questions? Email Dan Eastham at deastham@ballwin.mo.us.**



All weekly camps will take place Monday - Friday from June 6 - August 19.

Day Camps meet every week throughout the summer and feature a different theme. The themes will be reflected in games, crafts and activities. All drop off and pick-ups will be in front of The Pointe at Ballwin Commons, except Thursdays which will be at the North Pointe Aquatic Center. Parents will remain in their vehicle at drop off and pick up. Campers will be swimming Monday - Friday, make sure to bring a swimsuit. Club PM (4 - 6 p.m.) is available to add on to any week for VIP \$25 and Reg \$30.

Age: 5 - 10 | Time: 7 a.m. - 4 p.m. | Fee: VIP \$140/week, Reg \$160/week

The **Middle** allows the older campers to enjoy the traditional camp structure with themes and swimming everyday all in a group of friends their age. Drop off and pickup are at The Pointe entrance with parents remaining in their vehicle. Club PM (4 - 6 p.m.) is available to add on to any week for VIP \$25 and Reg \$30.

Age: 11 - 13 | Time: 7 a.m. - 4 p.m. | Fee: VIP \$140/week, Reg \$160/week

Aqua Camp meets at Holloway Park Pavilion each morning before heading to the pool for all day swimming and water games. This is a perfect way to spend your summer: outside, active, and in the water! Aqua Campers are especially encouraged to bring plenty of sunscreen and water (sunscreen will not be provided by camp). Club PM (4 - 6 p.m.) is available to add on to any week for VIP \$25 and Reg \$30.

Age: 7 - 13 | Time: 7 a.m. - 4 p.m. | Fee: VIP \$140/week, Reg \$160/week

Week/Date	Camp	Field Trip	Ages	Time	Club PM
Week 1: June 6 - 10	Day Camp	Rock-n-Jump	5-10	7am - 4pm	Y
	The Middle	Rock-n-Jump	11-13	7am - 4pm	Y
	Aqua Camp		7-13	7am - 4pm	Y
	All Sports Camp		7-13	7am - 4pm	Y
	Explorers Camp		7-13	7am - 4pm	Y
Week 2: June 13 - 17	Day Camp	Science Center	5-10	7am - 4pm	Y
	The Middle	Science Center	11-13	7am - 4pm	Y
	Aqua Camp		7-13	7am - 4pm	Y
	Cheerleading/Dance Camp		7-13	7am - 4pm	Y
	Harry Potter Camp		7-13	7am - 4pm	Y
Week 3: June 20 - 24	Day Camp	STL Zoo	5-10	7am - 4pm	Y
	The Middle	STL Zoo	11-13	7am - 4pm	Y
	Aqua Camp		7-13	7am - 4pm	Y
	Basketball Camp		7-13	7am - 4pm	Y
	ARTventure Camp		7-13	7am - 4pm	Y
Week 4: June 27 - July 1	Day Camp	Bingo	5-10	7am - 4pm	Y
	The Middle	Bingo	11-13	7am - 4pm	Y
	Aqua Camp		7-13	7am - 4pm	Y
	Star Wars Camp		7-13	7am - 4pm	Y
	Let's Get Chemical		7-13	7am - 4pm	Y
Week 5: July 5 - 8	Day Camp	Wildwood B&B	5-10	7am - 4pm	Y
	The Middle	Wildwood B&B	11-13	7am - 4pm	Y
	Aqua Camp		7-13	7am - 4pm	Y
Week 6: July 11 - 15	Theater Camp		7-13	7am - 4pm	Y
	Day Camp	Transportation Museum	5-10	7am - 4pm	Y
	The Middle	Transportation Museum	11-13	7am - 4pm	Y
	Aqua Camp		7-13	7am - 4pm	Y
Week 7: July 18 - 22	Harry Potter Camp		7-13	7am - 4pm	Y
	Day Camp	Brunswick Bowling	5-10	7am - 4pm	Y
	The Middle	Brunswick Bowling	11-13	7am - 4pm	Y
	Aqua Camp		7-13	7am - 4pm	Y
	Disney Camp		7-13	7am - 4pm	Y
Week 8: July 25 - 29	Engineering Camp		7-13	7am - 4pm	Y
	Day Camp	Inflatables	5-10	7am - 4pm	Y
	The Middle	Inflatables	11-13	7am - 4pm	Y
	Aqua Camp		7-13	7am - 4pm	Y
	Pokemon Camp		7-13	7am - 4pm	Y
Week 9: August 1 - 5	Day Camp	Bingo	7-13	7am - 4pm	Y
	The Middle	Bingo	5-10	7am - 4pm	Y
	Aqua Camp		11-13	7am - 4pm	Y
	Movie/Board Games Camp		7-13	7am - 4pm	Y
Week 10: August 8 - 12	Day Camp	Pizza Party	5-10	7am - 4pm	Y
	The Middle	Pizza Party	11-13	7am - 4pm	Y
	Aqua Camp		7-13	7am - 4pm	Y
Week 11: August 15 - 19	Day Camp	Ice Cream Party	5-10	7am - 4pm	Y
	The Middle	Ice Cream Party	11-13	7am - 4pm	Y
	Aqua Camp		7-13	7am - 4pm	Y



Ballwin Golf Course

Information

333 Holloway Road
Ballwin, MO 63011
(636) 227-1750

Hours (first tee time - last tee time)

February	10 a.m. - 3 p.m.
March	9 a.m. - 4 p.m.
April	8 a.m. - 5 p.m.

Pricing

	9 holes	18 holes
Resident*	\$15	\$21
Resident* Sr/Jr*	\$13	\$19
Resident* Hero*	\$12	\$18
Non-Resident	\$17	\$26
Non-Resident Sr/Jr*	\$15	\$24
Non-Resident Hero*	\$14	\$23

Carts*

Riding Cart (9 holes)	\$8 per person
Riding Cart (18 holes)	\$13 per person
Pull Carts	\$2 per day
Surcharge Cart Fee	\$5 per round
<i>*You must be 18+ to rent a Riding Cart.</i>	

*Residents must present an active Parks & Recreation Resident ID card to receive this rate (purchased for \$5 at The Pointe and renewed annually for \$1. To purchase a Parks & Recreation Resident ID card, residents must provide an unpaid gas, sewer, water, or electric bill and complete an application (a PDF copy of online bill is acceptable).

*Hero: Police, Fire, EMS, Veterans, and Active Military

*Senior: 62 and older

*Junior: 17 and under



Rent the Ballwin Events Center

333 Holloway Road
Ballwin, MO 63011

We want to help you plan & host your perfect 2022 event!

Inquires, contact Kate Duffy
(em) eventsplanner@ballwin.mo.us
(ph) 636-227-2355



Junior Golf Clinic

The Junior golf clinic will be held three times during the year to help our members learn to play & get ready for golf season. This clinic will start at the Big Bend Driving Range. The Ballwin Golf Course will host the putting and chipping portions later in the session.

Dates: April 24 - May 15

Time: 1 - 2 p.m.

Fee: VIP \$99, Reg \$109

Ages: 7 - 12

Location: Big Bend Driving Range

Adult Golf Clinic

The Adult golf clinic will be held three times during the year to help our members learn to play & get ready for golf season. This clinic will start at the Big Bend Driving Range. The Ballwin Golf Course will host the putting and chipping portions later in the session.

Dates: April 24 - May 15

Time: 2 - 3 p.m.

Fee: VIP \$99, Reg \$109

Ages: 18+

Location: Big Bend Driving Range

St. Pat's 18-Hole Golf Tournament

The Ballwin Summer Classic Golf Tournament is a two-day, 18-hole, three-man team scramble. Shotgun tee times are at 6:30 a.m. or 1 p.m. (same tee time each day). The AM flight will start at 6:30 a.m. and have lunch after play. The PM flight will have lunch beginning at 12 p.m. and will start at 1 p.m. The entry includes greens fees, carts, lunches, and prizes (3 places in 4 flights). Register your team online.

Date: Saturday, March 19

Time: 10 a.m. shotgun start

Fee: VIP/Reg \$220 (team of three)

Ages: 14+

Location: Ballwin Golf Course

PET SUPPLIES PLUS

Minus the hassle.



Plus

A helpful neighborhood store.

Minus

Keeping you waiting.

More ways to shop your local store!

1 Hour Curbside Pickup

Free Same-Day Delivery

Save More with Autoship

At Pet Supplies Plus, our stores are smaller by choice and our shelves are stocked with just the right products, specifically chosen to help you get in, get out, and get home happy.

- + **Price Match Guarantee**
- + **Carefully selected products for all of your furry, scaly & feathery friends**
- + **Large variety of Made in the USA treats & toys**

rewards

Sign up, shop & get rewarded.

Join today!

\$1 spent equals 5 points

Birthday gift for your pet

Members-only sale pricing

Earn free product on select brands

Scan to learn about Loyalty



Pet Supplies Plus Ballwin

15311 Manchester Rd. | 636.686.7181

Mon-Sat: 9am-8pm • Sun: 10am-6pm

Independently owned and operated

Swim Lessons & Aquatics

Infant Self Rescue (ISR)

ISR swim lessons are now being held at The Pointe. This one-on-one class is designed to help children, six months - six years old learn emergency survival skills for the pool. Contact Stacy Wistuba at (636) 686-0039 or info@gatewayISR.com

Group Swim Lessons

We offer year-round group swim lessons at The Pointe! These lessons are designed for infants, children, and adults six months and older. The program teaches water safety skills, all four primary strokes, and much more in a safe and fun environment. Lessons are taught in a 5:1 ratio so that time is optimized with each participant.

Tuesday/Thursday Sessions

Dates: Feb. 15 - March 10
March 29 - April 21
Time: 4:30 p.m., 5:15 p.m.,
or 6 p.m.
Fee: VIP \$60, Reg \$75
Location: The Pointe

Saturday Sessions

Dates: April 2 - May 21
Time: 9:30 a.m. 10:15 a.m.,
or 11 a.m.
Fee: VIP \$60, Reg \$75
Location: The Pointe

Levels

- Seahorse - Parent/Child class, ages 0.5-3.
- Tadpoles - Beginner Level 1, ages 4-5.
- Clownfish - Beginner Level 2, ages 4-5.
- Otters - Intermediate Level, ages 6-7.
- Stingrays - Intermediate Level, ages 6-7.
- Seaturtles - Beginner Level, ages 7+.
- Swordfish - Intermediate Level, ages 7+.
- Barracuda - Advanced Level, ages 7+.

Unsure of what group swim lesson level to sign up for? Contact Aquatic Specialist, Anna Nickel, at anickel@ballwin.mo.us

Adult Swim Lessons

Adult group swim lessons are offered for any adult and teen that wants to learn the basics of swimming and become more comfortable in the water. Regular swim lesson sessions are broken down into 8 classes for 3 or more participants, 6 classes for 2 participants, and 4 classes for 1 participant.

Dates: April 2 - May 21
Time: 9:30 a.m. 10:15 a.m.,
or 11 a.m.
Fee: VIP \$60, Reg \$75
Ages: 16+
Location: The Pointe

Private Swim Lessons

We also offer private swim lessons. Lesson times are flexible to allow for adequate scheduling and planning. Request forms are available at The Pointe Front Desk, or North Pointe during season. Call The Pointe at (636) 227-8950 for more details.



Red Cross Lifeguard Course

SHALLOW WATER ONLY. Provides entry-level participants the knowledge and skills to prevent, recognize and respond to aquatic emergencies and to provide care for breathing and cardiac emergencies, injuries and sudden illnesses. For more details, contact Emily Wagemann at ewagemann@ballwin.mo.us

Dates: Feb. 11 - 13
March 11 - 13
April 1 - 3
April 29 - May 1
Time: 4:30 - 8:30 p.m. (F)
7 a.m. - 5 p.m. (S & Su)
Fee: VIP \$95, Reg \$165
Ages: 15+
Location: The Pointe

LGI Course

Are you a current American Red Cross lifeguard looking for the next step in your certification? Take this instructor level certification course and become a Lifeguard Instructor today! With an emphasis on hands-on learning, we will certify you to teach American Red Cross lifeguard courses including CPR/AED courses, coaches safety training, and waterpark skills. Contact Emily Wagemann at ewagemann@ballwin.mo.us.

Dates: February 26 - 28
Time: 7 a.m. - 5 p.m.
Fee: VIP \$150, Reg \$300
Ages: 17+
Location: The Pointe

Blue Dolphin Warm-Up

Winter is over and summer is right around the corner! Gear up for the Ballwin Blue Dolphin Swim Team with Blue Dolphin Warm Up. Participants will improve their physical conditioning and skill mechanics during this six-week session. Choose either Monday night, Wednesday night, or both! Time slot will be 6:30 - 7:30 p.m. Register online or at The Pointe.

Dates: April 4 - May 9 (M)
April 6 - May 11 (W)
Time: 6:30 - 7:30 p.m.
Fee: VIP \$40, Reg \$50
Ages: 8 - 14
Location: The Pointe

Ballwin Blue Dolphins

Learn more about the Ballwin Blue Dolphins swim & dive team here. Swim and Dive Team's Information Meeting and registration will take place on Saturday, April 2 at 10 a.m., Monday, April 4 at 6 p.m. or Wednesday, April 6 at 6 p.m. Registration opens on April 2nd.



North Pointe

Opening day is Saturday, May 28

Hours of Operation:

May 28 - August 21

Sat - Thurs 11:30 a.m. - 7:30 p.m.
Friday 11:30 a.m. - 9 p.m.

August 22 - September 5

Sat & Sun 11:30 a.m. - 7:30 p.m.
Labor Day 11:30 a.m. - 7:30 p.m.

We offer both resident and non-resident rates. Pay the daily fee or purchase a summer pool pass! For a list of our current fees, visit www.ballwin.mo.us/North-Pointe-Fees/

Questions? Call (636) 227-8950.

WE'RE HIRING!

SEASONAL POSITIONS AVAILABLE

WWW.BALLWIN.MO.US



New Ballwin Playground

Here's your first look at the brand-new New Ballwin Park Playground, coming this year! The City of Ballwin received a Land Water Conservation grant to assist in the purchasing and installation of this playground. This grant will cover 50% of the total project cost. In addition to replacing the current, outdated playground, the new project will include a swing set!



Putting you first
made us #1.

Greg Beasley, Agent
15212B Manchester Road
Ballwin, MO 63011
Bus: 636-227-4242
greg.beasley.b5wx@statefarm.com

Making you our #1 priority is what's made State Farm® #1* in auto insurance. I'm here to listen to your needs and to help life go right.
CALL ME TODAY.

*Based on written premium as reported by SNL Financial 2014.



State Farm Mutual Automobile Insurance Company
State Farm Indemnity Company; Bloomington, IL

State Farm County Mutual Insurance Company of Texas; Dallas, TX

1601917

Event Calendar

February

- 4 Daddy Daughter Dance
- 5 Mother Son Dance
- 7 Planning & Zoning Commission Meeting
- 11 Ignite: Pool Party
- 14 Board of Aldermen Meeting
- 19 Silly Sledding
- 21 Presidents' Day (City offices closed 2/21)
- 26 LGI Course Begins
- 28 Board of Aldermen Meeting

March

- 7 Planning & Zoning Commission Meeting
- 14 Board of Aldermen Meeting
- 18 Family Glow Bingo
- 19 St. Pat's 18-Hole Golf Tournament
- 21 Spring Break Camp Begins
- 21 Junior Lifeguard Camp Begins
- 28 Board of Aldermen Meeting

April

- 4 Planning & Zoning Commission Meeting
- 8 Rock N Roll Bingo
- 9 Underwater Egg Hunt
- 9 Adaptive Youth Egg Hunt
- 9 Youth Egg Hunt
- 11 Board of Aldermen Meeting
- 16 Outdoor Art
- 25 Board of Aldermen Meeting



Photo: 2016 Daddy Daughter Dance



Photo: 2019 St. Pat's 18-Hole Golf Tournament

For a complete and updated list of City events and meetings please visit www.ballwin.mo.us and select the events tab.

Planning and Zoning Commission meetings are scheduled for 7 p.m. in the Board Room on the first Monday of each month, subject to petitions.

Board of Adjustment meetings are scheduled for 7 p.m. in the Board Room on the third Wednesday of each month, subject to petitions.

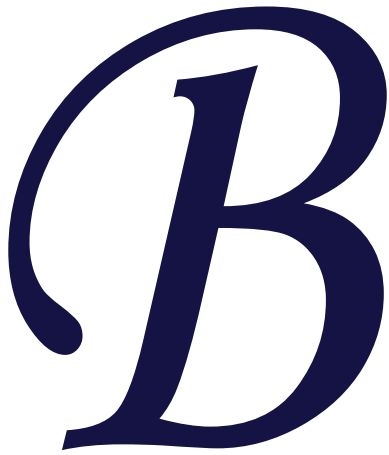
The Board of Aldermen meetings are scheduled to begin at 7 p.m. on the second and fourth Monday of each month in the Board Room.

Please note, all meetings are subject to change. Visit our website for the most current information.

We are now accepting reservations for our park pavilions! Park pavilions are available to rent every year from April - October. Payment is required upon reservation and reservations must be made in person at The Pointe. For more information, contact The Pointe at (636) 227-8950.



Cut along here to save this calendar



#1 Government Ctr
Ballwin, MO 63011

SUPPORT OUR ADVERTISERS!

Ballwin is fortunate to be home to many small businesses that make our city such a great place to live, work, and play. The cost of printing and mailing the Ballwin Life Magazine is partially underwritten by the many local businesses that purchased the advertisements found throughout the publication. Please thank these businesses for their support by shopping locally.

VISIT US ONLINE AT: www.ballwin.mo.us



WHERE CUSTOMERS ARE FIRST AND CARS ARE SECOND TO NONE



HUGE INVENTORY
EXCEPTIONAL DISCOUNTS
PICKUP AND DROPOFF SERVICE
PROUD BALLWIN DEALER SINCE 1985

ELCO Chevrolet Cadillac
15110 Manchester Rd
Ballwin, MO 63011
636-227-5333
www.elcochevroletcadillac.com

FIND NEW ROADS™