

# PHOTOGRAPHIC SIMULATION

## PROPOSED WIRELESS COMMUNICATIONS FACILITY

### SITE LOCATION MAP

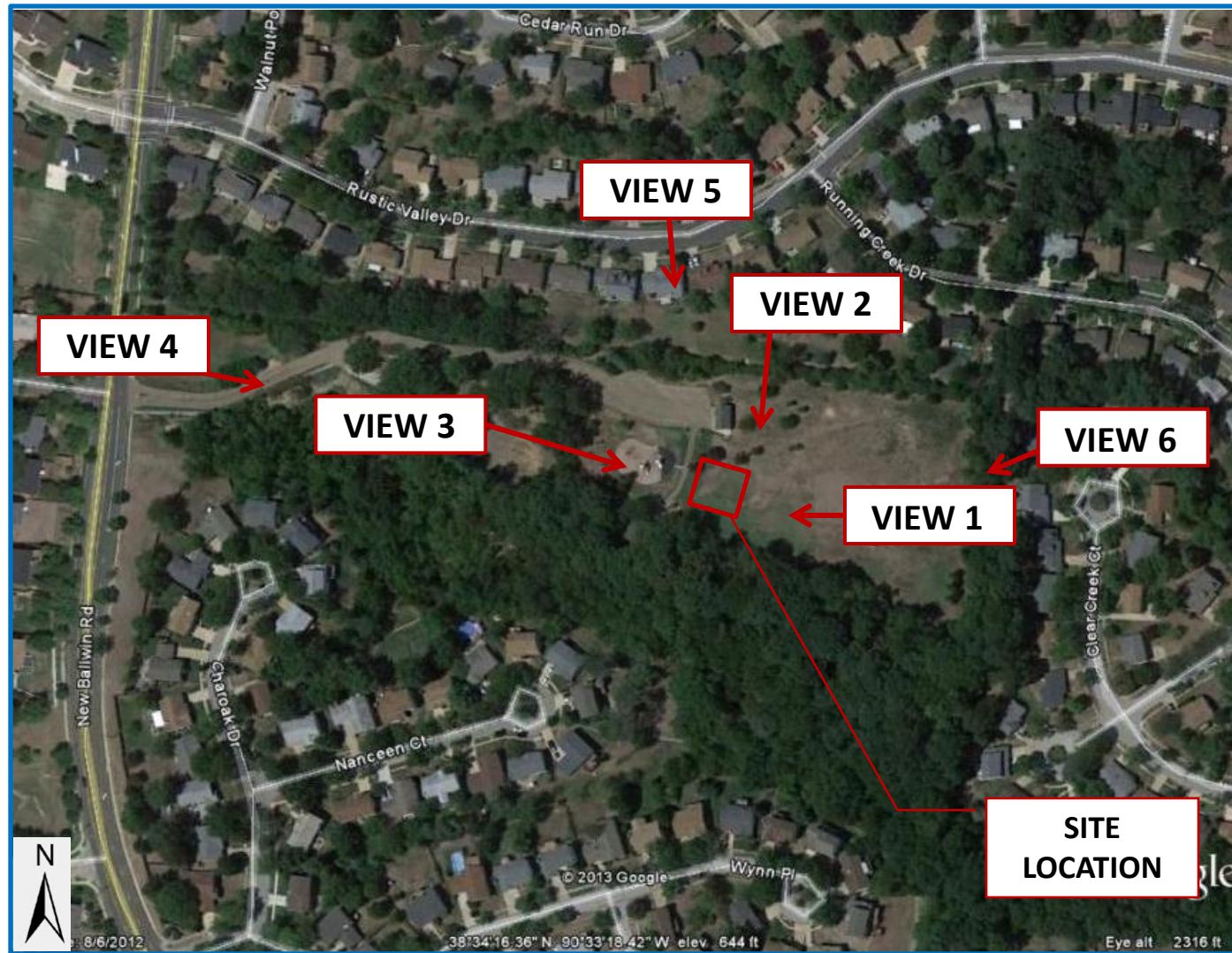


Image ©Google Maps 2013

The included Photographic Simulation(s) are intended as visual representations only and should not be used for construction purposes. The materials represented within the included Photographic Simulation(s) are subject to change.

SITE NUMBER:	MO2316
SITE NAME:	BIG BEND & OAK COMMONS
SITE ADDRESS:	500 NEW BALLWIN ROAD BALLWIN, MO 63011
DATE:	01/20/13
APPLICANT:	AT&T WIRELESS
CONTACT:	GEORGE XENOS BLACK & VEATCH (913) 458-9127



EXISTING SITE

**PHOTOGRAPHIC SIMULATION –  
VIEW 1 - LOOKING WEST**

**EXISTING VIEW 1 –  
LOOKING WEST**



PROPOSED AT&T 125'-0"  
MONOPINE

PROPOSED AT&T  
EQUIPMENT  
COMPOUND



EXISTING SITE

PHOTOGRAPHIC SIMULATION –  
VIEW 2 - LOOKING SOUTH

EXISTING VIEW 2 –  
LOOKING SOUTH



PROPOSED AT&T 125'-0"  
MONOPINE

PROPOSED AT&T  
EQUIPMENT  
COMPOUND



EXISTING SITE

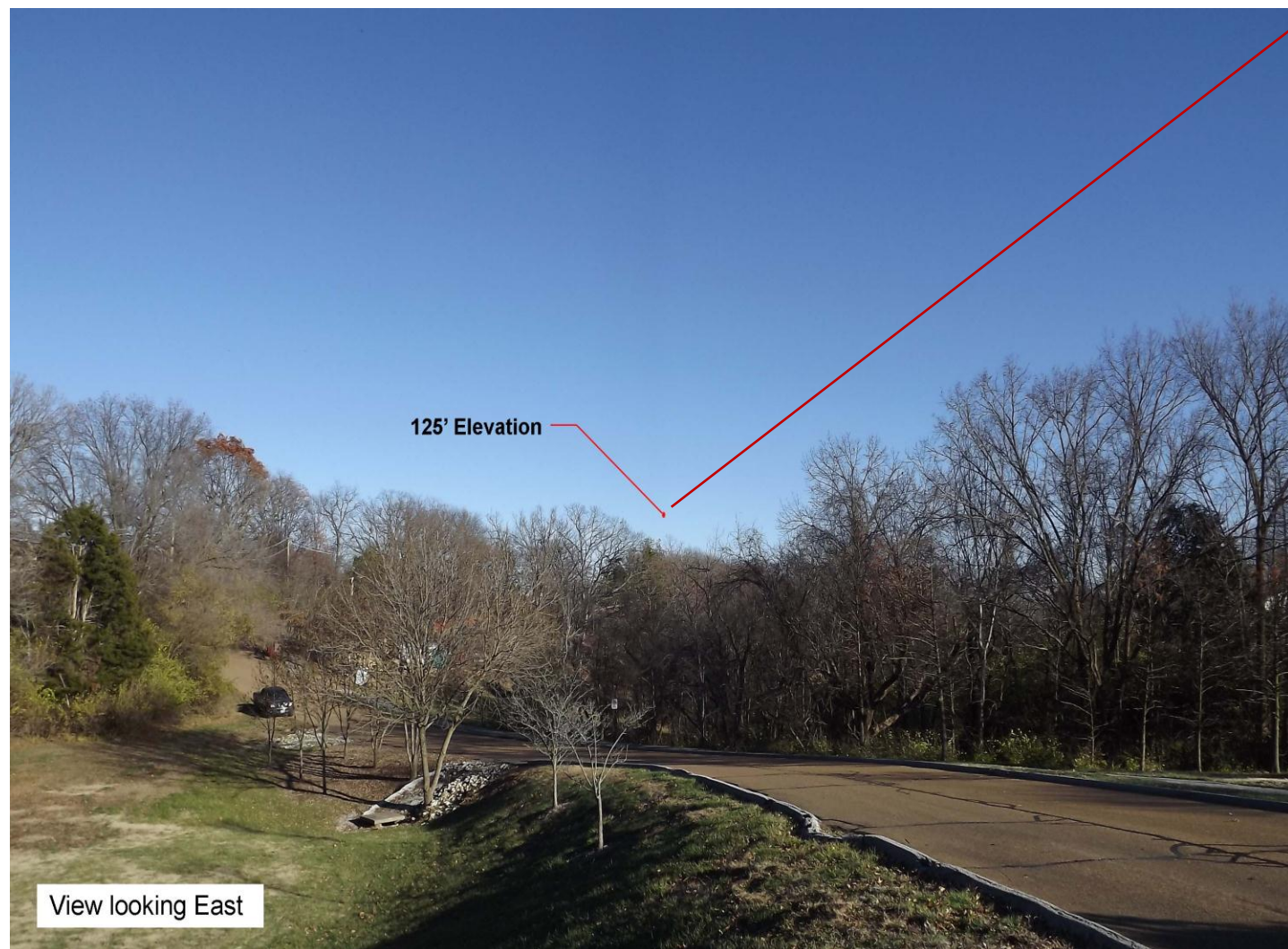
**PHOTOGRAPHIC SIMULATION –  
VIEW 3 - LOOKING SOUTHEAST**

**EXISTING VIEW 3 –  
LOOKING SOUTHEAST**



PROPOSED AT&T 125'-0"  
MONOPINE

PROPOSED AT&T  
EQUIPMENT  
COMPOUND



BALLOON TEST  
ELEVATION

PHOTOGRAPHIC SIMULATION –  
VIEW 4 - LOOKING EAST

EXISTING VIEW 4 –  
LOOKING EAST





BALLOON TEST  
ELEVATION

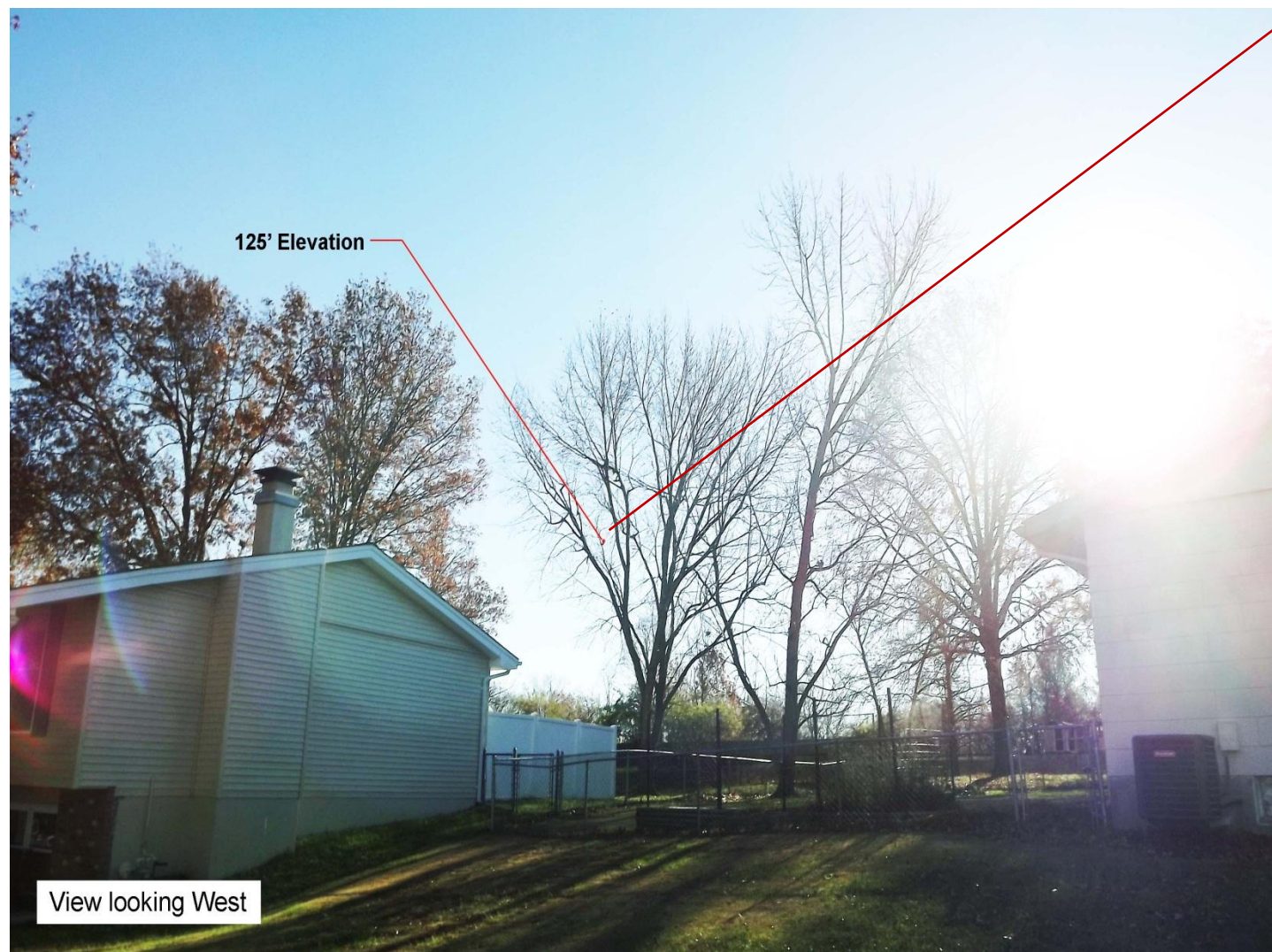
PHOTOGRAPHIC SIMULATION –  
VIEW 5 - LOOKING SOUTH

View looking South

EXISTING VIEW 5 –  
LOOKING SOUTH



PROPOSED AT&T 125'-0"  
MONOPINE



BALLOON TEST ELEVATION

PHOTOGRAPHIC SIMULATION –  
VIEW 6 - LOOKING WEST

View looking West

EXISTING VIEW 6 –  
LOOKING WEST



PROPOSED AT&T 125'-0"  
MONOPINE