



## OUR GOALS THIS WEEK

In week 3 we are continuing to work on growth. We are encouraging personal growth by helping children build independence and confidence in a safe environment. Campers develop social skills through teamwork, communication, and shared activities with peers. Engaging in new experiences allows campers to discover hidden talents and overcome challenges. The supportive atmosphere of day camp nurtures emotional resilience and a positive self-image.



## WELCOME

Welcome to Ballwin Camps! This week we offer Ballwin Day Camp, Teen Camp, Aqua Camp, & Theater Camp. We are excited to see you next week for Ballwin Camp Week 3. We hope your campers enjoy this week of camp!

### Reminders:

Bring the following items each day!

- Sack lunch and snack
- Refillable water bottle
- Swim suit and towel
- Backpack to carry items
- Wear socks & tennis shoes
- **SUN SCREEN**
- A smile and a happy attitude

DO NOT BRING: electronics, Pokémon cards, valuable items, or similar items



## SAFETY

- All Campers must be dropped off in person at the appropriate drop off locations. As you exit your vehicles please keep your camper close and watch for other traffic in the parking lots.
- Check your camper in with a counselor at drop off and get a verbal confirmation from the camp staff your camper is checked in.
- At pick-up, be sure to have your ID out and ready to show to the counselors. Showing your ID at pick-up is required.
- Any changes for Camper pick up, such as picking up early or having an alternate person pick up (i.e. Grandparent), please email the Camp Director at least 2 hours prior; [campdirector@ballwin.mo.us](mailto:campdirector@ballwin.mo.us)

## MISSOURI STATE EXEMPTION STATUS

Ballwin Parks and Recreation has been approved by the State of Missouri for Exemption Status for a childcare facility. Ballwin Day Camp meets all the required statutes to meet the exemptions set forth in Missouri Statute, sections 210.201 and 210.211, RSMo, which is monitored and enforced by the Department of Elementary and Secondary Education (DESE). Ballwin Parks and Recreation takes pride in offering quality & safe Day Camp to the Ballwin area.



# BALLWIN DAY CAMP

## SCHEDULE

**Monday** - 9am - 4 pm - The Pointe  
**Tuesday** - 9am - 4 pm - The Pointe  
**Wednesday** - 9am - 4 pm - The Pointe  
 • Field Trip Day - Wear your camp shirt  
**Thursday** - 9am - 4 pm - North Pointe  
**Friday** - 9am - 4 pm - The Pointe (Kona Ice)  
 For those that purchased  
 Club AM 7-9am - Club PM 4-6pm



## CAMP CHAT...

We want to remind all parents the importance of safe drop-off and pick-up procedures. We do require parents/guardians drop off campers in person with camp staff and picking up a camper by checking out with a counselor. We document all check-ins and pick-ups so we know who is in camp, and who has left camp at what time. Please refrain from dropping off campers from your vehicle and allowing them to walk unattended in the parking lot/sidewalk areas. Thank you for your cooperation.



## DAY CAMP FIELD TRIP

On Wednesday we will be traveling to the St. Louis County's Suson Park. Campers will explore the park with farm animals and experience the milking simulator. Please provide your camper with some quarters for the goat feed vending machines. Throw away sack lunches are encouraged. The campers will get on the bus at 9:30 am SHARP and will return around 2:00 pm, to The Pointe.



## SWIMMING DAY CAMP

- **Monday & Tuesday** - Indoor Pool
- **Wednesday** - NO Swimming - Field Trip
- **Thursday** - North Pointe,
  - drop off & pickup - Holloway Park Pavilion.
- **Friday** - Indoor Pool
- Campers need to bring a towel, on all days campers are getting wet.
- Please bring your own US Coast Guard approved Lifejacket if your child is required to wear one!
- Swim tests will be administered every Monday.





# BALLWIN TEEN CAMP

## SCHEDULE

**Monday** - 9am - 4 pm - The Pointe

**Tuesday** - 9am - 4 pm - North Pointe

**Wednesday** - 9am - 4 pm - The Pointe

- Field Trip Day - Wear your camp shirt

**Thursday** - 9am - 4 pm - North Pointe

**Friday** - 9am - 4 pm - The Pointe (Kona Ice)

For those that purchased  
Club AM 7-9am - Club PM 4-6pm



## FIELD TRIP

On Wednesday Teen Camp will be heading to Main Event. This is one of the teens favorite field trip, who doesn't like arcades, laser tag, bowling, and fun? Teens will be provided pizza and drinks as part of the field trip. No need to bring a packed lunch on this one, unless you have dietary needs. The campers will get on the bus at 9:30 am SHARP and will return around 2:00 pm, to The Pointe.



## TEEN TALK...

Did you know these people attended summer camp as teenagers?

1. Natalie Portman – Attended a performing arts camp where she developed her acting skills.
2. Denzel Washington – Participated in a Boys & Girls Club camp that helped him stay focused and inspired.
3. Steven Spielberg – Attended a Boy Scout summer camp where he made his first short film.
4. Robert Downey Jr. – Participated in theater camps as a teenager, laying the foundation for his acting career.



## SWIMMING

### TEEN CAMP

- **Monday** - Indoor Pool
- **Tuesday & Thursday** - North Pointe
  - drop off -Holloway Park Pavilion
  - pick up - Inside North Pointe
- **Wednesday** - NO Swimming - Field Trip
- **Friday** - Indoor Pool
- Campers need to bring a towel, on all days campers are getting wet.
- Please bring your own US Coast Guard approved Lifejacket if your child is required to wear one!
- Swim tests will be administered every Monday.







# BALLWIN AQUA CAMP

## SCHEDULE

Monday - Friday

- 9am - 4 pm - North Pointe Aquatic Center
- Drop off at Pavilion by Holloway Park
- Pick up inside North Pointe Aquatic Center

For those that purchased  
Club PM 4-6pm  
(NO Club AM)



## BUBBLE TALK...

Each day Aqua Camp will meet at the Pavilion at Holloway Park. Once all campers are checked in they will head into the facility for activities/games, eat lunch, and swim during open swim. Remember to bring your sun screen and be ready to apply multiple times during the day. Swimming can be exhausting, so campers will always have an option to get out of the pools, hang out in a shaded pavilion, & do other activities other than swimming. Concessions is available, but each camper must bring their own \$. Ballwin Bucks is an easy option to add funds to a key fob to be used at concessions, Ballwin Bucks can be purchased at the front desk.



## NEW FOR AQUA CAMP

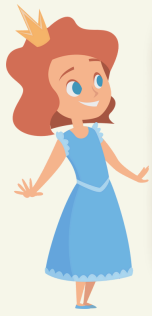
Again this year, Aqua Camp requires all campers to be able to pass a Swim Test. The swim test will be swimming 25 yards unassisted and tread water for 2 minutes. This is to ensure campers possess the sufficient swimming skills to participate in swimming activities and games. All campers will be tested on Monday. Those that do not pass, will be transferred to regular Day Camp, which will include a \$20 transfer fee.



## SWIMMING AQUA CAMP

- **Monday - Friday** - We Swim Every Day!
- Campers need to bring a towel every day, preferably more than one.
- Please bring an extra set of dry clothes.
- Swim tests will be administered every Monday.
- In the case of Inclement Weather, we may move Aqua Camp to the Golf Course Event Center. Camper's parents/guardians will be notified via TextCaster.





## BALLWIN THEATER CAMP

### SCHEDULE

Monday - 9am - 4 pm - The Pointe - Mtg Room B  
Tuesday - 9am - 4 pm - The Pointe - Mtg Room B  
Wednesday - 9am - 4 pm - The Pointe - Mtg Room B  
Thursday - 9am - 4 pm - The Pointe - Mtg Room B  
Friday - 9am - 4 pm - The Pointe - Mtg Room B

- Kona Ice will be available for purchase

For those that purchased  
Club AM 7-9am - Club PM 4-6pm  
(Drop off and pick up at Playground)



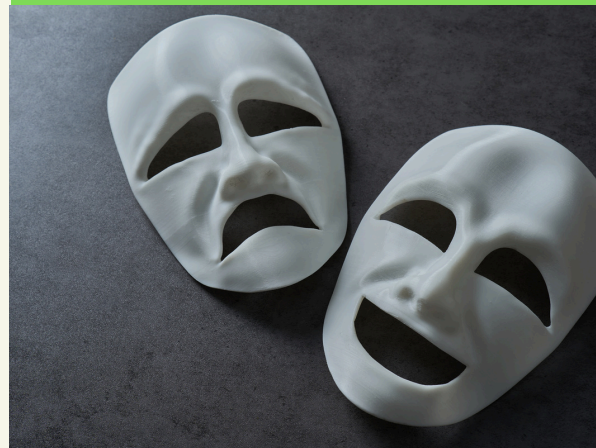
### THEATER CHAT...

In theater camp each camper will select a role as part of the drama team, production team, or both. Everyone is included and participates in the success of the "Big Show." Please mark your calendars to attend the production on Friday (last day of camp) prior to pick up. We guarantee it will be a show you will not want to miss.



### DIRECTOR: MRS. FONTANA

Mrs. Fontana is returning again this year as the Director of Theater Camp. By popular demand by campers, staff, and parents we are pleased to have Mrs. Fontana coming back next week, with many years of experience teaching drama at Crestview Middle School.



### SWIMMING

#### CHEER CAMP

- Monday - Friday - Indoor Pool
- Campers need to bring a towel and on all days campers are getting wet.
- Please bring your own US Coast Guard approved Lifejacket if your child is required to wear one!
- Swim tests will be administered every Monday.





## **CAMP NOTIFICATIONS**

**Ballwin Camps will be using TEXTCASTER, as it's notification method this year. In the event the schedule changes or an update on camp that needs immediate attention, we will be using TEXTCASTER.**

### **DIRECTIONS:**

**Step 1: Scan the QR code**

**Step 2: Sign up by filling in name and zip code.**

**Step 3: Click on -Yes to receive texts  
(email is also an option)**

**Step 4: Choose the "SUMMER CAMP" message group.**

**Step 5: Add in your secure code and follow prompts.**



## **SUNSCREEN**

Sunscreen is required for each camper to bring to each day of camp. Camp Staff have scheduled sunscreen application times throughout the day. Campers will be required to apply and re-apply sunscreen regardless of how sunny or cool the weather. Please provide enough sunscreen for your camper to apply during the entire week. Sunscreen must be SPF 30 or higher. It is suggested campers come to camp familiar with their sunscreen and how to apply it.



## **LIFE JACKETS**

New this year, Ballwin has included a lifejacket question to all camp registration. If you indicated you want your camper to wear a lifejacket, we will require them to wear one at all swimming times (No exceptions). You are required to send your camper with their own life jacket.

- Note: All life jackets must be US Coast Guard Approved with a clear label. Any unapproved Lifejackets will not be allowed and will affect your campers access to swimming.





Every Friday, Ballwin Day Campers and Specialty Camps located at The Pointe will have the opportunity to purchase a treat from Kona Ice. If your camper wants to partake, please send them with cash on Fridays. This is optional and may not be offered on days of bad weather. Kona Ice costs between \$4-\$6 depending on size of cup.

# CONGRATULATIONS!



## CAMPERS OF THE WEEK

Each week the camp leads will select a few campers that have shown great Ballwin Spirit, Kindness, and Good Attitudes during the week. On Friday's we will recognize these campers!

A big Thank you to Oberweis for sponsoring this program.



# OVERWEIS.

## STAFF "CHAMP AT CAMP"

Ballwin Camp Staff have been challenged to provide superior care and memorable experiences at camp. By doing so they put aside the daily challenges of being a counselor and showcase a positive attitude and a go getter mentality. If you want to nominate a counselor for this award, please use the link below.



A Champ at Camp is a creed that stands for "Counselors are Heroes, Ambassadors, Mentors, and Practitioners" at Camp. Each week we will take nominations from parent using the link below. Camp counselors will be able to win three categories of recognition; Peoples Choice (your nominations), Directors Award, and Most Spirited camp counselor. The camp counselors will be recognized each Friday with the Campers of the Week, and also receive a congratulations gift!

## NOMINATE YOUR CAMP CHAMP: CLICK HERE